



Made in Italy

2026 CATALOGUE

MACHINES & ACCESSORIES





Made in Italy

2026 Catalogue

www.ibea.it

Index

LAWN MOWER _____ PAG. 6

AERATORS _____ PAG. 16

BRUSHCUTTERS _____ PAG. 17

HEDGE TRIMMER _____ PAG. 26

MINITRANSPORTERS _____ PAG. 31

FLAIL MOWERS _____ PAG. 35

OLIVE SHAKER _____ PAG. 38

SOD CUTTER _____ PAG. 42

CHAINSAW _____ PAG. 43

PRUNERS AND TYING MACHINE _____ PAG. 44

TILLER _____ PAG. 47

MOTOR PUMPS _____ PAG. 48

GENERATORS _____ PAG. 49

ENGINES _____ PAG. 51

new

Battery Line

Discover the new line of Ibea battery-powered products.

A **Made in Italy** project designed for unprecedented work efficiency.

_____ PAG. 52

Accessories Catalogue

Explore the Ibea Katana® line of accessories.

_____ PAG. 55

Lawnmower

IDEA
STEEL DECK

IDEA is the steel-deck lawnmower your neighbors will envy. Comfortable, agile, and easy to use thanks to its ergonomic design and intuitive controls. It's also easy to clean and store during the winter season.

“For every green space, an IDEA.”



Quick and easy to use



The **cutting height adjustment** is simple and intuitive. Two ergonomic knobs, one on the front axle and one on the rear, allow you to raise and lower the machine through **6 different positions**, from a minimum of 24 mm to a maximum of 76 mm. The knobs operate on reinforced plates, preventing wear to the deck.

Details that make the difference



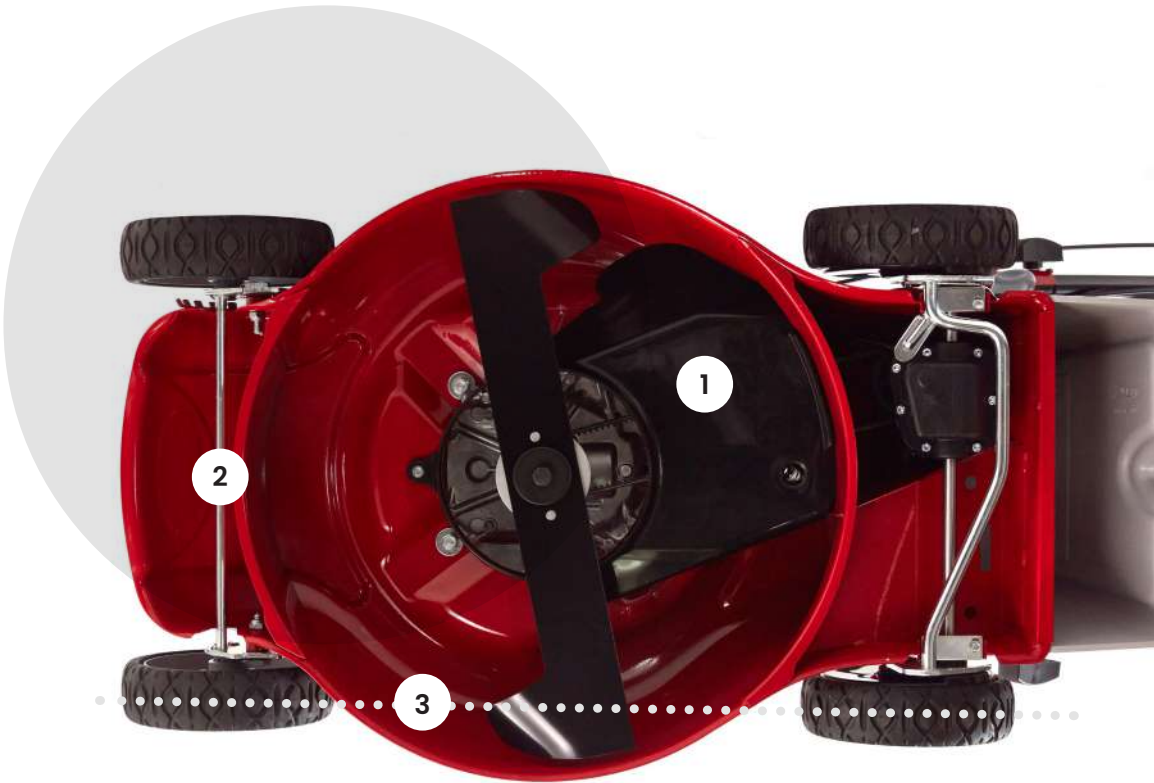
Thanks to the **sintered steel bushing system**, wheel movement is smooth and reliable, ensuring **excellent maneuverability** on all types of terrain and long-lasting durability.

MULCHING PLUG INCLUDED

The cut grass is directed through a wide discharge tunnel that ensures optimal filling of the grass catcher.

Moreover, the deep deck design improves collection performance, even with wet and heavy grass.

The mulching plug seals the discharge channel, allowing the cut grass to remain inside the deck, where it is **finely shredded** and then **redistributed on the ground**, creating a natural fertilizer.



1. This chute retains the cut grass that hasn't yet reached the catcher, preventing it from falling onto the lawn when the machine stops.
2. The axles are reinforced and extremely sturdy, designed to absorb impacts along their entire length.
3. On all decks, the wheel track is within the width of the deck itself, allowing for precise and easy trimming near edges, curbs, and walls.

| Model | IDEA42L | IDEA42SL |
|-----------------------|---|--------------|
| Engine Type | 4-stroke | |
| Engine | IBEA OHV 139 cc | |
| Start-up | Recoil | |
| Transmission | Push | Single-speed |
| Speed | - | 3,5 Km/h |
| Body | Steel | |
| Cutting width | 42 cm | |
| Mulching plug | Included | |
| Cutting height | Front and rear adjustment 2.4 cm to 7.6 cm (6 positions) | |
| Basket capacity | 55 lt | |
| Tank capacity | 0,8 lt | |
| Weight | 26 Kg | |
| Lawn size | 0-800 sqm | |
| Product certification | CE | |

Cutting width: **42 cm**



IDEA42L

IDEA42SL

Cutting width: 48 cm

| Model | IDEA47L | IDEA47SL | IDEA47SH |
|-----------------------|---|-----------------|--------------------|
| Engine type | 4-stroke | | |
| Engine | IBEA OHV 139 cc | IBEA OHV 139 cc | HONDA GCV170 166cc |
| Startup | Recoil | | |
| Transmission | Push | Single-speed | |
| Speed | - | 3,5 Km/h | |
| Body | Steel | | |
| Cutting width | 48 cm | | |
| Mulching plug | Included | | |
| Cutting height | Front and rear adjustment 2.4 cm to 7.6 cm (6 positions) | | |
| Basket capacity | 55 lt | | |
| Tank capacity | 0,8 lt | | 0,9 lt |
| Weight | 27 Kg | | 30 Kg |
| Lawn size | 400-800 smq | | |
| Product certification | CE | | |



IDEA47L



IDEA47SL

IDEA47SH

| Model | IDEA47SBI | IDEA47BE |
|-----------------------|--|--|
| Engine Type | 4-stroke | Electric |
| Engine | B&S 150 cc Serie 575is Instarter OVH | B&S Electric 82 Li Series |
| Startup | Elettrico Instart | - |
| Transmission | Single-speed | Push |
| Speed | 3,5 Km/h | - |
| Body | Steel | |
| Cutting width | 48 cm | |
| Mulching plug | Included | |
| Cutting height | Front and rear adjustment 2.4 cm to 7.6 cm (6 positions) | |
| Basket capacity | 55 lt | |
| Tank capacity | 0,8 lt | - |
| Weight | 27 Kg | |
| Lawn size | 400-800 smq | 0-500 smq |
| Product certification | CE | |
| Included | Machine supplied complete with battery charger | Machine supplied complete with 1 battery and battery charger |

Electric Range



IDEA47SBI
Electric start

with built-in battery
10,8 V – 1,15 Ah

IDEA47BE
Electric motor

battery-powered
82 V – 5 Ah

Lawnmower

IDEA5301SL

STEEL DECK

With a cutting width of 53 cm, an Ibea 166 cc engine, and practical single-speed drive, this model delivers both power and maneuverability. Despite having dimensions similar to aluminum models, its steel deck and nylon wheels make it at least 5 kg lighter, enhancing practicality without compromising strength.

Having four cutting systems in a single machine means it can adapt to any garden need, from precise trimming to more demanding tasks. Grass collection with the rear bag ensures a clean result, while the rear or side discharge options allow for faster mowing, especially in tall grass conditions.

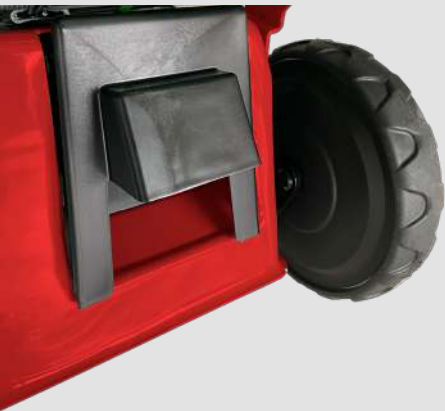
Mulching not only reduces waste but also improves lawn health by naturally releasing nutrients back into the soil.

This flexibility makes this lawnmower an essential ally for every gardening enthusiast.



4 CUTTING MODES

- The four cutting modes that make this machine truly unique are:
- Rear bag collection, to keep the lawn clean and tidy.
 - Rear discharge, ideal for quick mowing without the need to collect grass.
 - Side discharge, perfect for taller grass or less frequent mowing.
 - Mulching, easy to activate, which naturally fertilizes the lawn while reducing clippings.



| Model | IDEA5301SL |
|-----------------------|---|
| Engine type | 4-stroke |
| Engine | IBEA OHV 166 cc |
| Startup | Recoil |
| Transmission | single-speed |
| Speed | 3,5 Km/h |
| Body | steel |
| Cutting width | 53 cm |
| Mulching plug | Included |
| Cutting height | Front and rear adjustment 2.4 cm to 7.6 cm (6 positions) |
| Basket capacity | 60 Lt |
| Tank capacity | 1 Lt |
| Weight | 37 Kg |
| Lawn size | 1000-1500 sqm |
| Product certification | CE |

Lawnmower

SERIES 500 & 550

ALUMINIUM DECK

Ibea offers a range of lawnmowers with aluminium decks, designed to ensure both durability and lightness. These models are ideal for enthusiasts seeking the “perfect lawn,” thanks to their high-level technical features. The die-cast aluminium deck provides enhanced resistance to corrosion and long-lasting durability. Additionally, the light weight of the material improves maneuverability during operation. Ibea aluminium lawnmowers are available in various cutting widths to suit different surface areas and are equipped with powerful engines that ensure precise and efficient cutting. The range includes models with multiple collection options.

Ibea’s aluminium lawnmowers come with an easy-to-install mulching kit, which finely shreds the grass and distributes it across the lawn as a natural fertilizer—reducing collection and disposal time.

Wheels with sintered bushings ensure longer durability, smooth movement, and excellent maneuverability even on uneven terrain, providing reliable and effortless performance.



CENTRALIZED CUTTING HEIGHT ADJUSTMENT

The cutting height adjustment system on Ibea aluminium lawnmowers is designed for maximum ease and versatility, featuring a highly intuitive centralized mechanism.

With a single lever, the user can quickly change the cutting height—making the operation simple even for first-time users.

This system allows selection among various cutting heights, ranging from a minimum of 2.7 cm for a short, elegant lawn to a maximum of 7.2 cm, ideal for managing taller grass or less maintained areas.



The ergonomic and infinitely adjustable handlebars offer a comfortable experience for users of any height, reducing fatigue during operation.

Foldable handlebars make storage easier and complete a design focused on practicality and comfort, making Ibea lawnmowers an ideal solution for any gardening need.

| | |
|-----------------------|--|
| Model | 50027L |
| Engine Type | 4-stroke |
| Engine | IBEA OHV 166 cc |
| Startup | Recoil |
| Transmission | Single-speed |
| Speed | 3,6 Km/h |
| Body | Aluminum |
| Cutting width | 48 cm |
| Mulching plug | Included |
| Cutting height | Front and rear adjustment 2.7 cm to 7.2 cm |
| Basket capacity | 65 lt |
| Tank capacity | 1 Lt |
| Weight | 40 Kg |
| Lawn size | 800-1500 smq |
| Product certification | CE |

Cutting width: 48 cm



50027L
Ibea engine
single speed

Cutting width: 53 cm

| | | | |
|-----------------------|---|-------------------------|-------------------|
| Model | 55027L | 55027H | 55030H |
| Engine Type | 4-stroke | | |
| Engine | IBEA OHV 196 cc | HONDA GCV 170 166 cc | |
| Startup | Recoil | | |
| Transmission | Single-speed | | Speed variator |
| Speed | 3,6 Km/h | | da 3,0 a 4,8 km/h |
| Body | Aluminum | | |
| Cutting width | 53 cm | | |
| Mulching plug | Included | | |
| Cutting height | Front and rear adjustment from 2.7 cm to 7.2 cm | | |
| Basket capacity | 65 lt | | |
| Tank capacity | 1 Lt | 0,91 Lt | |
| Weight | 41 Kg | | |
| Lawn size | 800-1500 smq | | |
| Product certification | CE | | |



55027L
Ibea engine
Single-speed



55027H
Honda engine
Single-speed



55030H
Honda engine
Variator

Lawnmower

SERIES 500 & 550
GARDEN CROSS
ALUMINIUM DECK

THE LAWNMOWER WITH BBC BLADE CLUTCH

The ultimate tool for professional lawn care—meticulously engineered down to the smallest detail. High-quality materials and advanced solutions deliver outstanding performance, reliability, and satisfaction even for the most demanding professionals.

new



The perfect balance between a high-load-capacity blade and a precision-designed die-cast aluminium deck ensures exceptional grass collection, even under the most challenging working conditions.

The deck's durability is further enhanced by side reinforcements in steel and a front bumper specifically designed to absorb accidental impacts, increasing the machine's overall longevity.

The aluminium wheels, fitted with 2RS ball bearings, provide superior long-term resistance and reliability.

The BBC (Blade Brake Clutch)

The Blade Brake Clutch system allows the blade to disengage while the engine keeps running. This gives operators greater control during pauses or while navigating around obstacles, without needing to repeatedly shut down and restart the engine—making it especially useful in areas with interruptions or restricted zones.

Advantages of the BBC system:

- Increased efficiency: No need to constantly stop and restart the engine when pausing the cut, saving time and reducing stress on the engine, thereby extending its life.
- Reduced fuel consumption and engine wear: Keeping the engine running without the blade engaged minimizes the wear associated with repeated start-stop cycles. Additionally, the engine is spared unnecessary strain, which helps lower fuel usage.



The 3-speed transmission allows you to adjust the mowing pace according to terrain or job requirements. Designed for durability, the transmission features a die-cast aluminium gearbox with oil-bath lubrication, easily controlled by an ergonomic lever integrated into the handlebar.

This combination of advanced engineering and premium materials ensures high performance, dependability, and a long service life for the machine.



The perfect combination of a high-performance blade and a robust, die-cast aluminium deck ensures top-level grass collection even in demanding conditions. Deck strength is further enhanced by steel side reinforcements and a front bumper designed to absorb impacts, improving the mower's overall durability. Aluminium wheels with 2RS ball bearings ensure long-lasting resistance and reliability.

The 3-speed transmission adapts to various terrains and workloads and is built to last, featuring an oil-lubricated, die-cast aluminium housing, conveniently managed with an ergonomic lever on the handlebar.

This fusion of advanced engineering and premium materials guarantees excellent performance, maximum reliability, and a long operational life.

| Model | 55060GPH GARDEN CROSS |
|-----------------------|---|
| Engine Type | 4 tempi |
| Engine | HONDA GXV 160 163 cc |
| Startup | Recoil |
| Transmission | 3-speed transmission aluminum box |
| Speed | From 2.15 to 5 km/h |
| Body | Aluminum |
| Cutting width | 53 cm |
| Mulching plug | Sì |
| Cutting height | 4-wheel adjustment from 2 cm to 8 cm |
| Basket capacity | 65 lt |
| Tank capacity | 0,91 Lt |
| Weight | 58 Kg |
| Lawn size | >1500 smq |
| Product certification | CE |



Lawnmower

MULCHING
SERIES



The Ibea mulching lawnmower is the ideal solution for those seeking efficiency, convenience, and environmental care. Thanks to the mulching cutting system, it's possible to save up to 40% in working time by eliminating the need to empty grass bags, interrupt mowing, or dispose of clippings.

At the heart of the Ibea mulching system is the perfect synergy between the deck and the blade. The blade features angled fins designed to maximize shredding efficiency, while the deck—deep and rounded in design—ensures optimal circulation of the cut grass. This allows the grass to be reduced into ultra-fine particles, which are then evenly redistributed over the lawn as a natural fertilizer.



CENTRALIZED CUTTING
HEIGHT ADJUSTMENT

The Ibea mulching mower is equipped with a practical centralized cutting height adjustment system, featuring a lift pedal that allows selection of 6 different positions to suit any lawn condition.

Short cutting is ideal during slow growth periods or for regularly maintained lawns, offering a clean, uniform look. Longer cutting is perfect for spring or in conditions of strong growth, intense heat, or low humidity—protecting the lawn from drying out and improving its resilience.

Thanks to this intuitive adjustment system, maintaining a healthy and flawless lawn is easy in every season.

With the **Ibea mulching** mower, every cut is an investment in a healthier, lusher lawn.

The aluminium wheels on the Ibea mulching lawnmower ensure strength and long-term durability. Designed to withstand wear and impact, they offer excellent maneuverability even on uneven ground, making mowing smoother and more comfortable.

On the rear wheels, which are connected to the height adjustment mechanism, special cleaning flaps are installed to prevent shredded grass from building up and clogging the wheels.



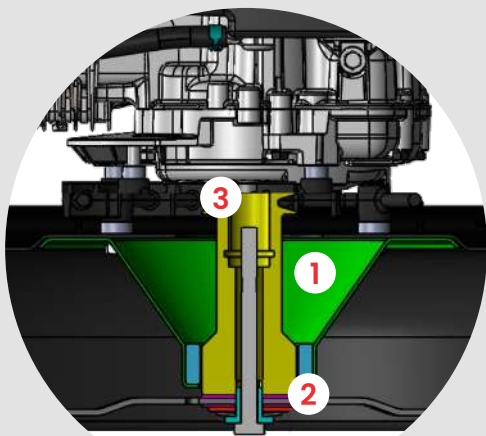
4770SL
Motore IBEA
Single-speed



5570SVL
Motore IBEA
Variable speed drive

- * Professional engine:**
- cast iron cylinder,
 - dual-element air filter (paper + foam),
 - auto choke system.

| Model | 4770SL | 5570SVL |
|-----------------------|--|--|
| Engine Type | 4-stroke | |
| Engine | IBEA 166cc | IBEA 196cc - OHV * |
| Startup | Recoil | |
| Transmission | Single-speed | Variator with aluminum housing - Rear traction |
| Speed | 3,5 Km/h | 2,5 - 4,0 Km/h |
| Body | Steel | |
| Cutting width | 46 cm | 55 cm |
| Cutting height | Centralized from 2.5 cm to 8 cm in 5 positions | Centralized from 3 cm to 7 cm in 5 positions |
| Tank capacity | 1 Lt | 0,8 Lt |
| Weight | 30 Kg | 41 Kg |
| Lawn size | < 1500 smq | > 1500 smq |
| Product certification | CE | |



1. Under-deck safety cone
Protects the crankshaft and the internal components of the lawn mower, ensuring reliable protection during operation.

2. Shock-absorbing clutch
Prevents damage to mower components by absorbing impacts, increasing the overall service life of the machine.

3. Blade hub
Supports and secures the blade, ensuring precise and efficient cutting on any type of terrain.



Aerator

To ensure your lawn has the best health and a lush appearance, it is essential to take care of it at key times of the year, such as spring and fall. During these seasons, it is important to aerate the soil to **promote the penetration of air, water and nutrients**, thus preparing the lawn for fertilization and planting. With **IBEA aerators**, you can **remove accumulated felt and moss**, improving soil quality and creating ideal conditions for healthy, even turf growth. Rely on IBEA's technology and efficiency for a **consistently flawless lawn**.

| | |
|-----------------------|--|
| Model | IB-260 |
| Engine Type | 4-stroke |
| Engine | HONDA GXV 160 163 cc |
| Engine power | 3.6 kW (4.8 Hp) |
| Working width | 50 cm |
| Cutting height | Millimeter adjustment - with transfer position |
| Cutting system | 4-sector rotor with moving blades |
| Number of blades | 48 |
| Drive | Push |
| Transmission | Double belt |
| Startup | Recoil |
| Handlebar | Foldable and adjustable in height |
| Professional wheels | Front solid rubber Rear with inner tube |
| Wheel sizes | Front: Ø 200 mm Rear: Ø 250 mm |
| Weight | 74 Kg |
| Product certification | CE |



Professional scarifier — compact and reliable. Its sturdy steel frame prevents any chassis flexing, enabling extremely precise work. The fixed blade reel (optional) and the standard 48-blade floating reel are interchangeable, and the working depth can be adjusted with millimetric precision to meet various needs.

It features a dual pulley system with double belt transmission to the rotor. The handlebar folds down to facilitate transport.



Floating blade kit (standard)
Code: IB-4031

Fixed blade kit (optional)
Code: IB-4040

Brushcutter

STRATO CHARGED Technology

The significant amount of clean air entering from the outside through two separate intake ports and accumulating in the cylinder transfer passages enhances the scavenging phases, which are thus performed with fresh air.

This results in a drastic reduction of unburned hydrocarbons (HC) at the exhaust.



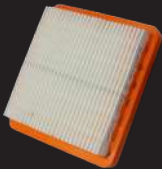
- 80%
✓ Extremely low emissions. HC reduction from 40,000 ppm to 8,000 ppm.
- + 30%
✓ Significant increase in torque and power.
- 20%
✓ Substantial reduction in fuel consumption.



Aluminum alloy cylinder with split intake port designed for strato-charge technology.



Thermal flange with 3 fastening points on the 25ST model and 4 fastening points on the other models.



Oversized paper air filter for extended operating time before maintenance.



Piston with dual piston rings, shell-cast, designed to improve cooling.

The 3 Types of IBEA Brushcutters

- 1. **Fixed shaft:** perfect for intensive and continuous work, these brushcutters are ideal for cutting tall grass and brush over large areas. The solid shaft ensures precision and durability, making them reliable tools for professional use.
- 2. **Multifunction:** a versatile solution that allows the brushcutter to be converted into other tools, such as pruners or hedge trimmers, thanks to interchangeable attachments. Ideal for those seeking practicality and maximum flexibility in a single device.
- 3. **Backpack:** designed for comfortable work on uneven terrain or in hard-to-reach areas, these models offer excellent comfort thanks to an ergonomic backpack that houses the engine, reducing operator fatigue. They also offer the ability to switch tools, transforming the brushcutter into a hedge trimmer, pruner, and more.

Each IBEA brushcutter is designed to deliver outstanding results, reflecting a meticulous attention to detail and the Italian manufacturing expertise that is synonymous with quality and reliability.



Ultra-light pistons with double rings, which reduce vibrations and ensure optimal cold starts.



Spheroidal cast iron piston rings, typically used only in racing engines, for improved compression.



Bevel gearhead equipped with 4 bearings, sealed to be waterproof and dirt-resistant.

The 3 Types of Handles

L: Ideal for trimming and working in tight spaces, ensuring greater control and precision.

B: Suited for operations on wide surfaces, offering superior comfort and reduced fatigue during prolonged use.

BT: Designed to further reduce vibrations, increasing comfort and safety during extended work sessions.



Brushcutters

RIGID
SHAFT

STRATO CHARGED range

| Model | 25ST | 32ST | 37ST |
|--------------------------------------|---------------------------|------------------------------|-----------------|
| Displacement | 25,4 cc | 30,8 cc | 30,8 cc |
| Power | 1,7 Cv / 1,25 kW | 2,2 Cv / 1,6 kW | 2,2 Cv / 1,6 kW |
| Filter | Paper | Paper | Paper |
| Transmission | 24 mm | 26 mm | 26 mm |
| Clutch | 54 mm | 62 mm | 62 mm |
| Tank capacity | 0,6 Lt | | |
| Handle | L, B | L, B | L, BT |
| Included accessories | Head 8 x 1.25 SX f, strap | Head 10 x 1.25 SX f, belting | |
| Weight empty, without cutting device | 5,3 Kg | 6,0 Kg | 6,0 Kg |
| Product certification | CE | | |



25ST 32ST | 37ST*

37ST EXTREME*

The new line of IBEA brushcutters with STRATO CHARGED technology features an exceptional 30.8cc - 2.2 HP engine, available in two different versions:

32ST for demanding private users and professionals who require a highly performing and ultra-light machine.

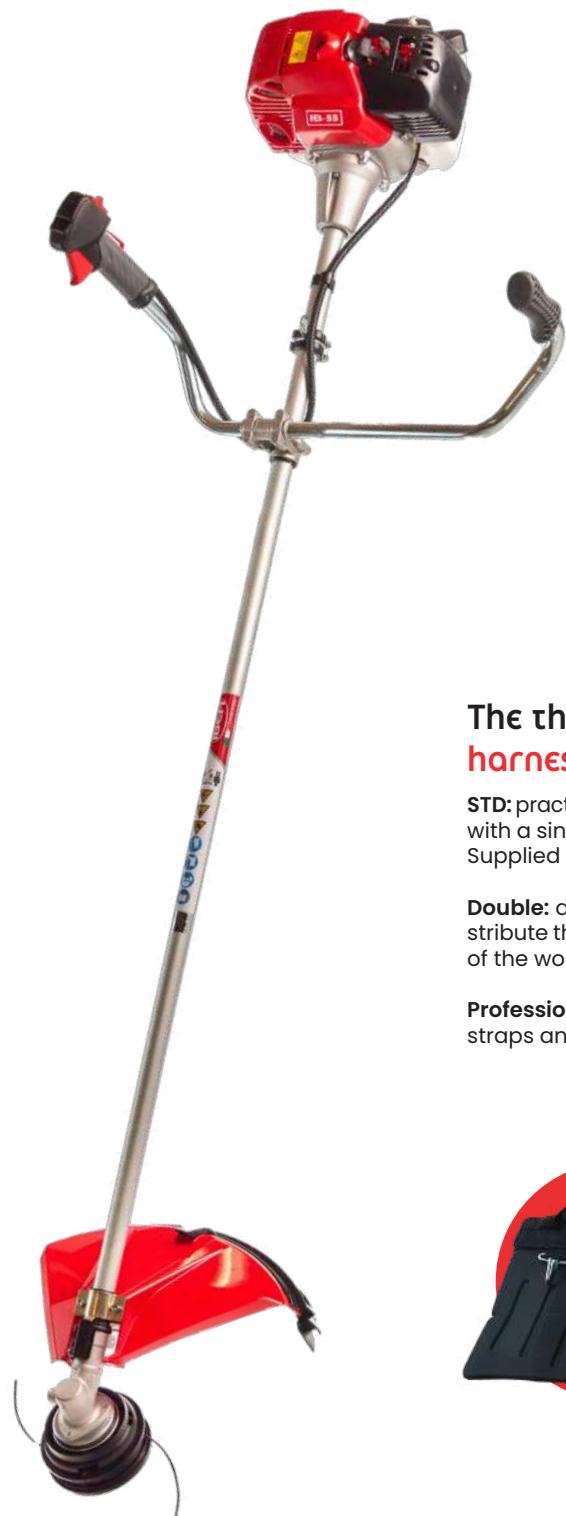
37ST equipped with EXTREME bevel gear, ideal for professional use. The perfect machine for the maintenance worker seeking excellent performance combined with maneuverability and lightness.

STRATO
CHARGED



50ST 65ST

| Model | 50ST | 65ST |
|--------------------------------------|--|-----------------|
| Displacement | 50,9 cc | 61,5 cc |
| Power | 3,4 Cv / 2,5 kW | 4,5 Cv / 3,3 kW |
| Filter | Paper | |
| Transmission | 30 mm | |
| Clutch | 78 mm | |
| Tank capacity | 1,1 Lt | |
| Handle | L, BT | BT |
| Included accessories | 10 x 1.25 SX f head, strap, grass disc | |
| Weight empty, without cutting device | 9,0 Kg | 10,0 Kg |
| Product certification | CE | |



TRADITIONAL range

| | |
|--------------------------------------|--|
| Model | 55 |
| Displacement | 51,7 cc |
| Power | 3,0 Cv / 2,2 kW |
| Start-up | Electronics |
| Filter | Paper |
| Transmission | 30 mm |
| Clutch | 78 mm |
| Tank capacity | 1,1 Lt |
| Handle | L (55L2), B (55B2) |
| Included accessories | 10 x 1.25 SX f head, strap, grass disc |
| Weight empty, without cutting device | 7,5 Kg |
| Product certification | CE |

The three types of harnesses

STD: practical and simple, it allows the brushcutter to be supported with ease. Equipped with a single-shoulder strap and a hip protector to prevent uncomfortable rubbing. Supplied as standard on L-series brushcutters.

Double: dual Cordura shoulder straps, ergonomic and adjustable, designed to distribute the weight of the brushcutter evenly and reduce operator fatigue at the end of the workday. Supplied as standard on B-series brushcutters.

Professional (sold separately): professional harness with double padded shoulder straps and ergonomic back support.



The two types of tap-and-go trimmer heads

SMART Ø120 mm (n°1 included): tap-and-go head with quick line loading system through the dedicated line guide tube.

SHARP Ø130 mm (sold separately): ultra-fast line loading system, available in two versions:

- **SOFT version** (n° 2): lightweight spool made of plastic and fiberglass with a central steel reinforcement.
- **HEAVY version** (n° 3): steel spool designed to ensure maximum strength and durability.



Brushcutter

MULTI
FUNCTION

Internal
combustion

new

Same attachments Two different power units

Discover all the attachments compatible with the multifunction brushcutters on page 25



Battery-powered
with brushless
motor

Brushcutters

ELECTRIC
MULTIFUNCTION
ORION

Electric Multifunction **ORION**

| | |
|--|---------------------------------------|
| Code | 40ECO-MUL |
| Model | ORION |
| Operating voltage | 40 V |
| Maximum power | 1500 W |
| Transmission | 26 mm |
| Brushless motor | Si |
| RPM | 4-speed: 4500 6000 7500 8500 |
| Compatible batteries | 2,5 Ah 5 Ah 20 Ah |
| Weight (motor unit only) | 3,2 Kg |
| Weight with brushcutter tool without cutting apparatus | 4,1 Kg |
| included accessories | Head 120 10x1,25 sx. f strap, disc |
| Only ENGINE GROUP | 40ECO-MUL-GM |
| Product certification | CE |



Battery life & the tools used

| Battery | | 2,5 Ah | 5 Ah | 20 Ah |
|-------------------------|---------------|-----------|------------|-----------|
| ORION motor body + tool | Pruner | 35/40 min | 70/100 min | 4,5/6,5 h |
| | Disc | 25/40 min | 50/80 min | 3,5/5,5 h |
| | Hedge trimmer | 25/35 min | 50/70 min | 3,5/4,5 h |
| | Nylon head | 15/25 min | 30/50 min | 2/3,5 h |

Autonomy is influenced by the nature of the work and the set speed.

The codes refer to the machine only, without batteries.

3 battery models

| Model | Cordless battery 2.5 Ah | Cordless battery 5 Ah | Backpack battery 20 Ah |
|---------------|-------------------------|-----------------------|------------------------|
| Code | P5030078 | P5030081 | P5030082 |
| Voltage | 40 V | 40 V | 40 V |
| Capacity | 2.5 Ah | 5 Ah | 20 Ah |
| Charging time | 1.5 h** | 3 h** | 6 h |
| Weight | 0.7 Kg | 1.2 Kg | 5.4 Kg (with strap) |
| Certification | | CE | |

**Charger (not included): code P5030079



BATTERY HOLDER KIT ON THE BELT:

holder + cable
Compatible with 2.5 Ah and 5 Ah batteries (battery not included)

Cod. P5030084



SLIDE:

Required for connection with backpack battery and battery belt support. It is positioned in the battery compartment of the brushcutter.

Cod. P5030085

3 types of power supply

ORION can be used with three types of power supply:

- With a 20 Ah – 800 W backpack battery
The backpack battery kit code P5030082 includes: 20 Ah battery + 1.8 m cable + harness + charger.
The slide must be purchased separately.
- With cordless battery of 2.5 Ah or 5 Ah
- With belt battery of 2.5 Ah or 5 Ah
The slide must be purchased separately.
The battery belt support kit must be purchased separately.

Brushcutters

MULTI
FUNCTION

STRATO CHARGED range

| Model | 25STMUL | 32STMUL |
|---|------------------------------|-----------------|
| Displacement | 25,4 cc | 30,8 cc |
| Power | 1,7 Cv / 1,25 kW | 2,2 Cv / 1,6 kW |
| Start-up | Electronics | |
| Filter | Sponge | |
| Transmission | 26 mm | |
| Clutch | 54 mm | 62 mm |
| Tank capacity | 0,6 Lt | |
| Handle | L | |
| Rotofix | No | |
| Included accessories | Head 120 10x1.25 sx. f strap | |
| Weight empty, without cutting apparatus | 5,3 Kg | 6 Kg |
| Only ENGINE GROUP | 426 € | 568 € |
| Product certification | 25STMUL-GM | 32STMUL-GM |
| Certificazione prodotto | CE | |



TRADITIONAL range

| Model | 28MUL | 35MUL |
|--------------------------------------|------------------------------|-----------------|
| Displacement | 28,5 cc | 35,0 cc |
| Power | 1,7 Cv / 1,25 kW | 2,0 Cv / 1,5 kW |
| Start-up | Electronics | |
| Filter | Sponge | |
| Transmission | 26 mm | |
| Clutch | 54 mm | 78 mm |
| Tank capacity | 0,5 Lt | 0,8 Lt |
| Handle | L | |
| Rotofix | No | Yes |
| included accessories | Head 120 10x1.25 sx. f strap | |
| Weight empty, without cutting device | 5,3 Kg | 6 Kg |
| Price | 516 € | 565 € |
| Only ENGINE GROUP | 28MUL-GM | - |
| Product certification | CE | |



Rotofix System*

The patented system allows the operator to choose whether to lock the handle in a specific position or let it rotate freely. This enables optimal working posture with any attachment.

Discover all the compatible attachments for the multifunction brushcutters on page 25.

The multifunction brushcutters come standard with the D120 brushcutter attachment.

Brushcutters

Backpack

| | |
|--------------------------------------|------------------------------|
| Model | 37STZA |
| Displacement | 30,8 cc |
| Power | 2,2 Cv / 1,6 kW |
| Start-up | Digital |
| Filter | Paper |
| Transmission | 26 mm |
| Clutch | 62 mm |
| Tank capacity | 0,6 Lt |
| Handle | L |
| included accessories | Head 120 10x1,25 sx. f, disc |
| Weight empty, without cutting device | 11 Kg |
| Product certification | CE |

New 37STZA with Strato Charged Engine

Small, lightweight, compact, comfortable, yet extremely powerful. The lightest backpack brushcutter on the market. Only 11 kg with over 2 HP of power. Ideal for operators working on slopes for extended periods. The padded back support and the latest anti-vibration system drastically reduce vibrations during use.

Comfort... even during storage

Traditional range

| Modello | 55ZA | 65ZA |
|--|-------------------------------------|-----------------|
| Cilindrata | 51,7 cc | 62,0 cc |
| Potenza | 3,0 Cv / 2,2 kW | 4,5 Cv / 3,3 kW |
| Accensione | Digitale con decompressore | |
| Filtro | Carta | |
| Trasmissione | 26 mm | |
| Frizione | 78 mm | |
| Capacità serbatoio | 1,1 Lt | |
| Impugnatura | L | |
| Accessori di serie | Testina 120 10x1,25 sx.f Disco erba | |
| Peso a vuoto, senza apparato di taglio | 11,6 Kg | 12 Kg |
| Certificazione prodotto | CE | |



Discover all the attachments compatible with backpack brushcutters on page 25

Brushcutters

TOOLS

Attachments for multifunction and backpack brushcutters

Suitable for all IBEA multifunction and backpack brushcutters, these attachments allow you to convert your machine for multiple uses such as pruner, hedge trimmer, hoe, brushcutter—reducing both purchase and maintenance costs.

ES150
Extension E1500
Length: 150 cm

ES75
Extension E750
Length: 75 cm

D120
Brushcutter
Length: 72 cm

PR35
Curved Pruner
BAR 254 mm and CHAIN 1/4"
Tilt 0° - Tube length 105 cm

PR90
Straight Pruner
BAR 254 mm and CHAIN 1/4"
Tilt 0° - Tube length 105 cm

AT48
Ultralight Hedge Trimmer T480
Blade length: 48 cm - Tooth pitch: 35
5-position tilt - Chrome vanadium blades

TIL20
Hoe
Blade length: 10 cm
Blade width: 15 cm



Hedge Trimmers

Battery-Powered
HEXIS

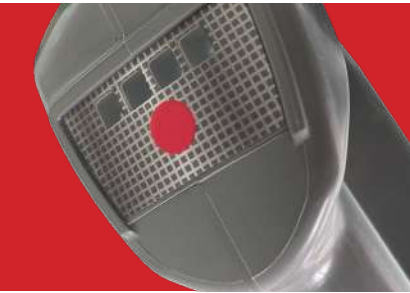


new

1 machine 3 compatible batteries

The new IBEA battery-powered hedge trimmer has been carefully designed and engineered by our team to deliver a powerful, high-performance MADE IN ITALY product.

Three types of batteries can be used on the same machine configuration: two cordless options (2.5 Ah and 5 Ah) that are lighter, and one backpack battery (20 Ah) that offers longer runtime. This lets you choose the best setup for every job.



LED indicators on the handle show the selected speed mode (3 speeds) and, through different flashing patterns, signal any machine malfunctions.



The front handle provides greater stability and safety during use.



Thanks to the rotating handle system for vertical cutting, wrist strain and stress are reduced while maintaining blade position.

The battery hedge trimmer is available in two blade lengths—60 cm and 75 cm—to suit different cutting needs. The 60 cm blade is ideal for more agile use and for trimming smaller or confined hedges. The 75 cm blade offers greater reach, perfect for taller or wider hedges. Both versions guarantee precision and high performance, ensuring flawless results.



Hedge Trimmers

Battery-Powered
HEXIS

| Model | TS4060ECO | TS4075ECO |
|----------------------------|-----------|-----------|
| Operating voltage | 36 V | |
| Maximum power | 1200 W | |
| Brushless motor | Si | |
| Blade length | 60 cm | 75 cm |
| Weight (machine body only) | 3,8 Kg | 4,1 Kg |
| Product certification | CE | |

The codes refer to the machine only, without batteries



3 battery models available



| Model | Cordless battery 2,5 Ah | Cordless battery 5 Ah | Backpack battery 20 Ah |
|---------------|-------------------------|-----------------------|------------------------|
| Code | P5030078 | P5030081 | P5030082 |
| Voltage | 40 V | 40 V | 40 V |
| Capacity | 2,5 Ah | 5 Ah | 20 Ah |
| Autonomy* | 40/60 min | 80/120 min | 5.5/8 h |
| Charging time | 1.5 h** | 3 h** | 6 h |
| Weight | 0.7 Kg | 1.2 Kg | 5.4 Kg (with strap) |
| Certification | CE | | |

**Charger (not included): code P5030079

* Battery life depends on the type of work performed and the speed setting

3 types of power supply

HEXIS can be used with three types of power supply:

1. with **backpack battery** 20 Ah – 800 W
 - The backpack battery kit code **P5030082** includes: 20 Ah battery + 1.8 m cable + strap + battery charger.
2. with **cordless battery** 2.5 Ah or 5 Ah
3. with **belt battery** 2.5 Ah or 5 Ah
 - battery belt mount kit + 1.8 m cable is available by ordering code **P5030084** (battery not included)



BATTERY HOLDER KIT ON THE BELT:
holder + cable
Compatible with 2.5 Ah and 5 Ah batteries (battery not included)
No. P5030084

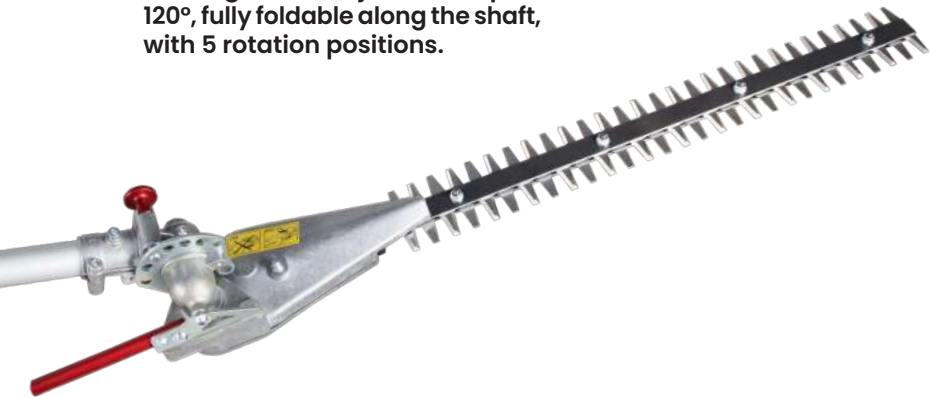
Pole Hedge Trimmer & Pruner

Battery-powered
ORION

New battery-powered range: hedge trimmer and pole pruner.

Ideal for trimming hedges and pruning trees with high branches, they allow safe and comfortable work from the ground thanks to the 1.4 m shaft. Lightweight and easy to handle, they ensure maximum comfort through the compact brushless electric motor powered by 40 V lithium batteries (available in 2.5 Ah or 5 Ah versions, sold separately).

Cutting head adjustable up to 120°, fully foldable along the shaft, with 5 rotation positions.



Hedge trimmer Orion 1500

| Model | TS1500ECO |
|--------------------------|-----------|
| Operating voltage | 40 V |
| Maximum power | 1500 W |
| Brushless motor | Si |
| Machine length | 2180 mm |
| Blade length | 480 mm |
| Weight (power unit only) | 4.5 Kg |
| Product certification | CE |

Codes refer to the machine only, without batteries.



Electric Motor

Compact, lightweight, and powerful brushless motor. The motor installed on the machine delivers a maximum power of 1.5 kW while weighing only 600 g.

The motor also ensures a high cooling airflow.



| Model | PR1500ECO |
|--------------------------|-----------|
| Operating voltage | 40 V |
| Maximum power | 1500 W |
| Brushless motor | Si |
| Machine length | 2030 mm |
| Bar length | 254 mm |
| Weight (power unit only) | 4.5 Kg |
| Product certification | CE |

Codes refer to the machine only, without batteries.

Professional high-performance pruners equipped with an automatic steel oil-pump lubrication system and a 100 cc oil tank. They feature a professional bar and chain, with the bar secured by two studs.

The robust hook positioned near the blade improves grip on the branch, while the internal flywheel helps prevent chain bouncing.
Chain: 1/4" specific for pruning.



2 battery models



| Model | Cordless battery 2,5 Ah | Cordless battery 5 Ah |
|-------------------------------|-------------------------|-----------------------|
| Code | P5030078 | P5030081 |
| Voltage | 40 V | 40 V |
| Capacity | 2,5 Ah | 5 Ah |
| Runtime – pole hedge trimmer* | 25/35 min | 50/70 min |
| Runtime – pole pruner* | 35/50 min | 70/100 min |
| Charging time | 1.5 h** | 3 h** |
| Weight | 0.7 Kg | 1.2 Kg |
| Product certification | CE | |

**Battery charger (not included): code P5030079
* Runtime depends on the type of work performed and the selected speed.



Hedge Trimmers

Gas
Powered

Guaranteed **MADE IN ITALY** Quality

IBEA hedge trimmers are ideal for any type of hedge, delivering excellent performance in every situation. To achieve a clean and precise cut, it is essential to have powerful, easy-to-handle, and well-balanced models—features that distinguish our range. The double blade cutting system, made of anti-fray Chrome-Vanadium steel, ensures a clean and long-lasting result, maintaining cutting quality over time.

This not only guarantees a flawless appearance but also promotes plant health by preventing damage and encouraging optimal growth.



Rotating Handle

The rotating handle of the hedge trimmer can be adjusted to 5 different positions within 180°, offering total customization to suit your working style.

This feature allows you to maintain a secure and comfortable grip at every stage of cutting, reducing effort and improving results.

With a simple movement, you can select the most ergonomic position, ensuring greater precision and less fatigue.

| Model | TS2460 | TS2475 |
|--------------------|-------------------------------|-------------------|
| Engine | 2 Stroke | |
| Engine brand | IBEA | |
| Displacement | 23,0 cc | |
| Power | 1,2 Cv / 0,9 kW | |
| Clutch | Ø 54 mm | |
| Startup | Recoil | |
| Handle | Rotatable 180° in 5 positions | |
| Blade | Double-edged 60 cm | Double-edged 75cm |
| Fuel tank capacity | 0,52 Lt | |
| Noise level | 106 dB(A) | |
| Certification | CE | |
| Weight | 5,5 Kg | 5,8 Kg |

Minitransporter

IBT-3000
SERIES

The IBT-3000 minitransporter is the smallest in the range (load capacity 300 kg). It is a robust and easy-to-use machine.
The axle supporting the front wheels is 32 mm thick and weighs 3.6 kg.
The extendable side panels provide great flexibility, making this machine suitable for many different situations.



IBT-3500
IBEA engine
Tilting roller

The IBT-3500 version is equipped with one pivoting roller that improves comfort and increases the load capacity up to 350 kg.

This makes the product suitable for both private users and professionals.



2+1 Gearbox

| Model | IBT-3001 | IBT-3002 | IBT-3500 |
|--------------------------|----------------------|-----------|----------|
| Engine | Honda GX160 | IBEA R210 | |
| Engine power (max) | 5,5 Cv | 5,9 Cv | |
| Start-up | Recoil | | |
| Dimensions (L x W x H) | 1836x640x1050 mm | | |
| Length. track contact | 600 mm | | |
| Wd. track contact | 180 mm | | |
| Track width | 620 mm | | |
| Track tension adjustment | Easy System | | |
| Extendable bed | Yes | | |
| Dumper body | No | | |
| Discharge | Manual | | |
| Dumping angle | 85° | | |
| Length inside body | 930 mm | | |
| Wd. inside body | 590 mm | | |
| Max. skip height | 210 mm | | |
| Loading capacity | 300 Kg | | 350 Kg |
| Weight | 170 Kg | | 175 Kg |
| Transmission | 2 forward, 1 reverse | | |
| Dead man device | Yes | | |
| Product certification | CE | | |



IBT-3001
HONDA engine



IBT-3002
IBEA engine

Minitransporter

IBT-4010
SERIES

The IBT-3500 version is equipped with one pivoting roller that improves comfort and increases the load capacity up to 350 kg.

This makes the product suitable for both private users and professionals.

2 tilting rollers

| Model | IBT-4010 range | IBT-4011 range |
|--------------------------|----------------------------|----------------|
| Engine | IBEA R210 | Honda GX160 |
| Engine power (max) | 5,9 Cv | 5,5 Cv |
| Start-up | Recoil | |
| Dimensions | 1836x640x1050 mm | |
| Length. track contact | 600 mm | |
| Wd. track contact | 180 mm | |
| Track width | 620 mm | |
| Track tension adjustment | Easy system | |
| Extendable bed | Yes | |
| Dumper body | No | |
| Discharge | Manual/Hydraulic | |
| Dumping angle | Manual 85° / Hydraulic 62° | |
| Length inside body | 930 mm | |
| Wd. inside body | 590 mm | |
| Max. skip height | 400 mm | |
| Loading capacity | 400 Kg | |
| Weight | 181 Kg | |
| Transmission | 2 forward, 1 reverse | |
| Dead man device | Yes | |
| Product certification | CE | |



All versions of the 4010 series are equipped with 1 tilting roller that enhance comfort.



IBT-4010
IBEA engine

IBT-4011
HONDA engine

All available configurations

| Model | IBT-4010 Ibea engine | IBT-4011 Ibea engine |
|------------------------|-------------------------|-------------------------|
| With manual tipping | IBT-4010 | IBT-4011 |
| With hydraulic tipping | IBT-4010H | IBT-4011H |

Minitransporter

IBT-5000
SERIES

The IBT-5000 minitransporter, with a 500 kg load capacity, is the big brother of the IBT-3000 and IBT-4000 models. Designed to offer even greater robustness and load capacity, it features a different 3+2 transmission compared to the smaller models to ensure high performance even at full load.

| | |
|--------------------------|----------------------|
| Model | IBT-5000 range |
| Engine | Mitsubishi GB 181 |
| Engine power (max) | 6,3 Cv |
| Start-up | Recoil |
| Dimensions | 1900x630x1070 mm |
| Length. track contact | 700 mm |
| Wd. track contact | 180 mm |
| Track width | 680 mm |
| Track tension adjustment | Easy system |
| Extendable bed | Yes |
| Dumper body | Yes |
| Discharge | Manual/Hydraulic |
| Dumping angle | 65° |
| Length inside body | 1030 mm |
| Wd. inside body | 630 mm |
| Max. skip height | 250 mm |
| Loading capacity | 500 Kg |
| Weight | 210 Kg |
| Transmission | 3 forward, 2 reverse |
| Dead man device | Yes |
| Product certification | CE |



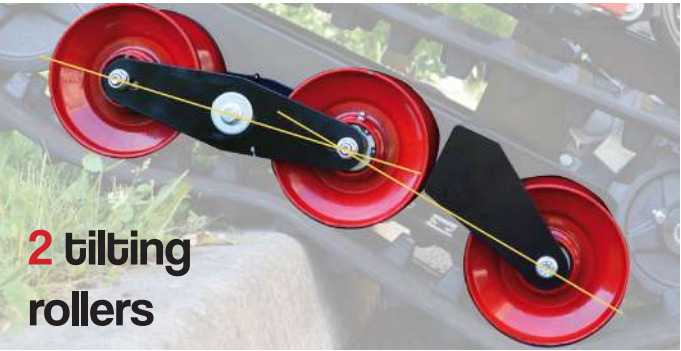
IBT-5000



IBT-5000 DHZ

All available configurations

| Model | IBT-5000 range |
|--|----------------|
| With manual tipping | IBT-5000 |
| With hydraulic tipping | IBT-5000H |
| With galvanized dumper body + hydraulic tipper | IBT-5000DHZ |



3+2 gears

Snow blade kit

Compatible with minitransporters equipped with hydraulic tipping (H)



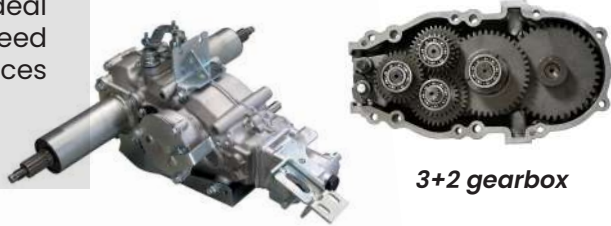
Minitransporter

IBT-500R

SERIES

Over the top!

The 500R minitransporter has a load capacity of 600 kg and is the largest model in the Ibea Minitransporter line. It is ideal for professional use and unbeatable when there is a need to transport all kinds of materials in hard-to-reach places where an agile and robust vehicle is required.



3+2 gearbox



The 5-speed gearbox (3 forward gears and 2 reverse) is the heart of every minitransporter. It is oversized to safely handle the enormous torque generated by the engine. Thanks to the efficient reduction gear, the minitransporters can move in any situation and under any load.

The gearbox is installed at the front of the frame, ensuring the machine is balanced both empty and fully loaded, and facilitates movement even on particularly rough terrain.

The frame is very sturdy, with 3 mm thickness for the side rails and 4 mm for the front part. The frame attachment is proportionate to the cargo bed, and the platform pins are equipped with two grease fittings with sealed rotating bushings. A steel plate protects the gearbox from accidental impacts.

All available configurations

| Model | IBT-500R range |
|--|----------------|
| With manual tipping | IBT-500R |
| With hydraulic tipping | IBT-500RH |
| With dumper body + hydraulic tipping | IBT-500RDH |
| With galvanized dumper body + hydraulic tipper | IBT-500RDHZ |



IBT-500R

IBT-500R DHZ

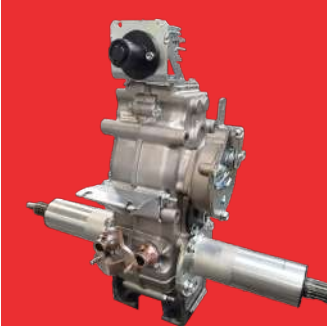
Flail Mowers

NEW

RANGE

Robustness, control, and adaptability in every environment

The new Ibea flail mower range is designed to deliver high performance in vegetation management, even in demanding conditions such as steep or overgrown terrain. Available in wheeled or tracked versions, with three working widths (60, 75, and 87 cm), these machines combine power, precision, and ease of use to meet the needs of professional operators in agricultural, forestry, and civil applications.



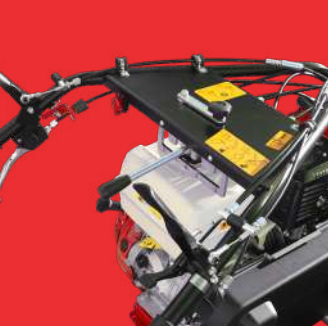
Smooth handling even on slopes

Each model features a mechanical gearbox with 3 forward speeds plus reverse, with an easy-to-use selector accessible during operation. Independent steering systems with wheel lock simplify maneuvering and turning, while the rear wheel release facilitates movement with the engine switched off.



Precise cutting and consistent performance

The rotor equipped with staggered steel knives reduces vibrations and power absorption, ensuring uniform cutting across all types of vegetation. The number of flails varies according to the working width. Cutting height is adjustable from 5 to 80 mm via a conveniently accessible micrometric screw.



Ergonomics for continuous operation

The handlebar is adjustable in height and laterally with a single lever. Separate, ergonomic levers for traction and rotor control provide progressive and independent management, even under demanding working conditions.



Components engineered for durability

Belt tension indicators allow immediate inspection of belt tension, reducing wear and preventing failures. In wheeled models, a steel guard protects the lower part of the engine from dust and debris, preserving efficiency and cooling performance over time.

Snow blade kit

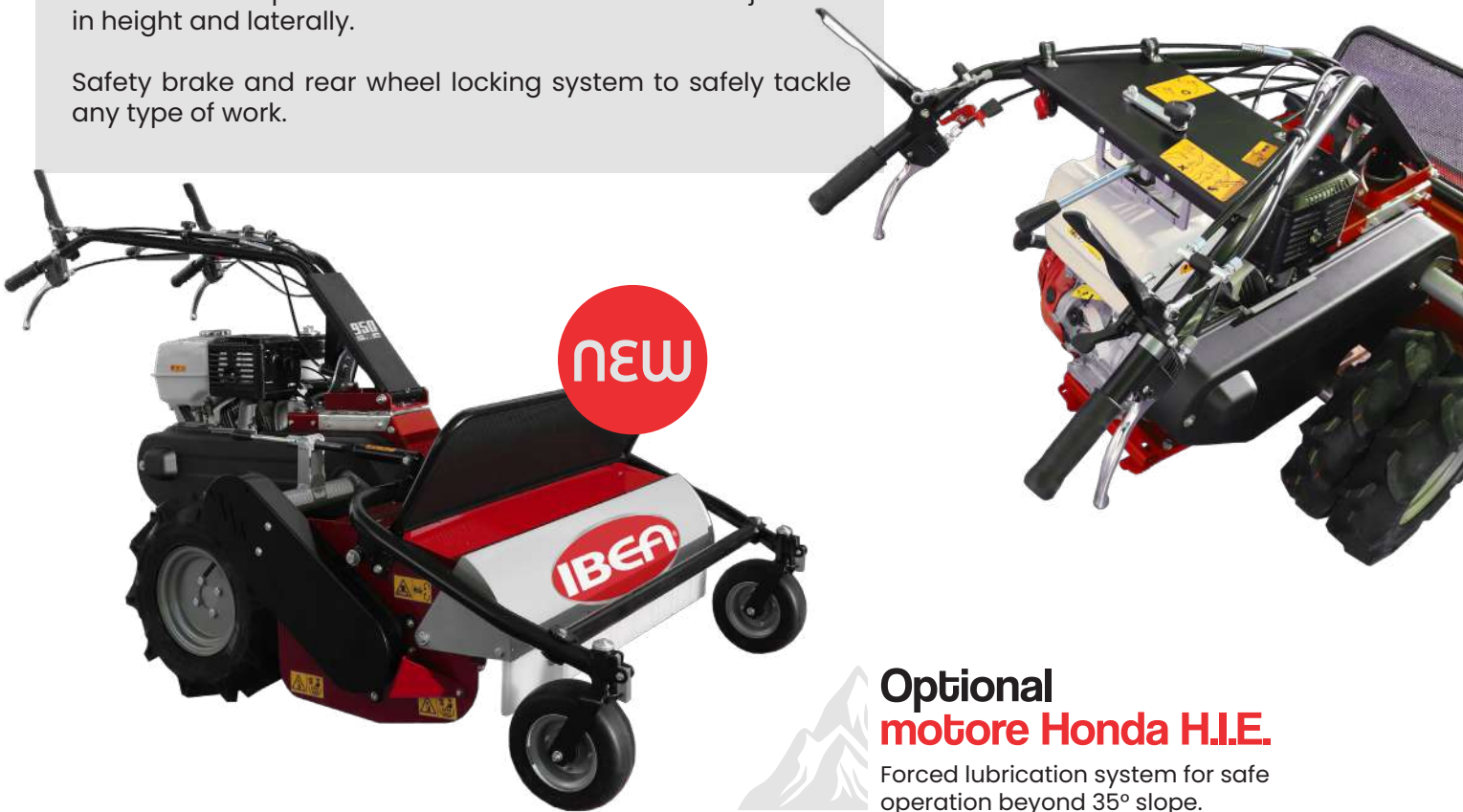
Compatible with minitransporters with hydraulic tipping (H)

Flail mowers

PRO SERIES

3-speed forward transmission and 1 reverse gear with a control lever for simple and immediate use. Handlebar adjustable in height and laterally.

Safety brake and rear wheel locking system to safely tackle any type of work.



Optional motore Honda H.I.E.
Forced lubrication system for safe operation beyond 35° slope.

| Model | IB-650PRO | IB-850PRO | IB-950PRO |
|--------------------------|--|-----------------------------|--------------------------------|
| Engine brand | HONDA | | |
| Engine model | GX270 | GX390 | |
| Engine power | 6,3 kW - 8,4 Hp (3600 rpm) | 8,7 kW - 11,7 Hp (3600 rpm) | |
| Engine air filter | Oil bath | | |
| Cutting width | 60 cm | 75 cm | 87 cm |
| Transmission | 3 forward, 1 reverse | | |
| Speed | Forward 1.22 - 2.8 - 4.4 Km/h reverse 1.22 Km/h | | |
| Transmission | Mechanics | | |
| Gearbox lubricant | Oil bath | | |
| Cutting height | Adjustable from 5 mm to 80 mm | | |
| Startup | Recoil | | |
| Service brake | Yes | | |
| Handlebar | Height adjustable, laterally adjustable | | |
| Rotor flaps | 32 | 40 | 48 |
| Wheels | Tractor 16 x 6.50 - 8 | | Twin Wheels Tractor 4,00-8" |
| Weight | 165 Kg | 185 Kg | 210 Kg |
| Mechanical steering lock | Yes | | |
| Product certification | CE | | |

Flail mowers

HD SERIES

3-speed forward transmission and 1 reverse gear with a control lever for simple and immediate use. Handlebar adjustable in height and laterally.

Safety brake and rear wheel locking system to safely tackle any type of work.



Tilting lock
A frame lock, activated directly from the handlebar, keeps the cutting deck stable on steep slopes, preventing lifting and ensuring consistent cutting performance.

Optional motore Honda H.I.E.
Forced lubrication system for safe operation beyond 35° slope.

| Model | IB-650HD | IB-850HD | IB-950HD |
|--------------------------|--|-----------------------------|----------|
| Engine brand | HONDA | | |
| Engine model | GX270 | GX390 | |
| Engine power | 6,3 kW - 8,4 Hp (3600 rpm) | 8,7 kW - 11,7 Hp (3600 rpm) | |
| Engine air filter | Oil bath | | |
| Cutting width | 60 cm | 75 cm | 87 cm |
| Transmission | 3 forward, 1 reverse | | |
| Speed | Forward 1.5 - 2.8 - 3.5 Km/h reverse 1.5 Km/h | | |
| Transmission | Mechanics | | |
| Gearbox lubricant | Oil bath | | |
| Cutting height | Adjustable from 5 mm to 80 mm | | |
| Startup | Recoil | | |
| Service brake | Yes | | |
| Rotor flaps | 32 | 40 | 48 |
| Handlebar | Height adjustable, laterally adjustable | | |
| Tracks | Rubber 1600x600x260 | | |
| Weight | 200 Kg | 220 Kg | 240 Kg |
| Mechanical steering lock | Yes | | |
| Product certification | CE | | |

Olivarex

ELECTRIC

OLIVE SHAKERS

The electric motor powering the Olivarex delivers high output and reliability, ensuring optimal performance in all working conditions. The arms, operating with a wide alternating motion, generate a precise oscillation of the eight carbon-fiber rods. These rods are engineered to be lightweight and durable, ensuring effective yet gentle harvesting.

The angled, aerodynamic harvesting head facilitates the entry of the rods into the canopy, minimizing stress on the branches while maximizing work efficiency.

New anti-vibration system

Thanks to the latest-generation anti-vibration system, the Olivarex can be used for extended periods without operator fatigue. This system significantly reduces vibrations transmitted to the hands and arms, improving comfort during operation.



Fully waterproof

The harvesting head features an advanced sealing system designed to protect internal components from dust and moisture.

| Model L | Model XL |
|-------------------------------------|--------------------------------------|
| Pole length: from 2.1 m to 3.1 m | Pole length: f rom 2.4 m to 3.7 m |

| Model | IB-E1200L/XL | IB-E4800L/XL HD |
|-----------------------|---------------------------------|---------------------------------|
| Engine | Elettrico 12 V | Elettrico 48 V |
| Power supply | 12V (direct from battery) | Elettrica 12/24 V |
| Recommended battery | 12 V 70 : 80 Ah | 12 V 50 : 60 Ah |
| Handle | Ergonomic with switch | |
| Speed | 1 speed | |
| Weight model L | 2,5 Kg | 2,4 Kg |
| Weight model XL | 2,8 Kg | 2,7 Kg |
| Extension | Standard telescopic | |
| Power cable | 10 m with clamps and connectors | 20 m with clamps and connectors |
| Product certification | CE | |



Olivarex

ELECTRIC

OLIVE SHAKERS

| | |
|-----------------------|---------------------------------|
| Model | IB-E5000ECO-L IB-E5000ECO-XL |
| Engine | Brushless motor 40 V |
| Handle | Ergonomic with membrane switch |
| Speed | 3 speeds |
| Weight model L | 2,4 Kg |
| Weight model XL | 2,7 Kg |
| Extension | Standard telescopic |
| Product certification | CE |

IB-E5000ECO
40 V engine



Model L
Shaft length
from 2.1 m to 3.1 m

Model XL
Shaft length
from 2.4 m to 3.7 m

The codes refer to the machine only, without batteries.

3 types of power supply

The Olivarex IB-E5000 can be used with three types of power supply:

- With 20 Ah – 800 W backpack battery**
The backpack battery kit, code P5030082, includes: 20 Ah battery + 1.8 m cable + harness + charger.
- With belt battery support + cable + 2.5 Ah or 5 Ah battery**
The belt battery support kit + 1.8 m cable is available by ordering code P5030084 (battery not included).
- With ground power supply**
The 20 m cable + power supply kit is available for purchase, code P5030086 (battery not included).



Cable + power supply
kit

Code: P5030086

3 compatible batteries



| Model | 2.5 Ah battery | Battery 5 Ah | Backpack battery 20 Ah |
|---------------|----------------|--------------|------------------------|
| Code | P5030078 | P5030081 | P5030082 |
| Voltage | 40 V | 40 V | 40 V |
| Capacity | 2,5 Ah | 5 Ah | 20 Ah |
| Autonomy* | 25/40 min | 50/80 min | 3,5/5,5 h |
| Charging time | 1.5 h** | 3 h** | 6 h |
| Weight | 0.7 Kg | 1.2 Kg | 5.4 Kg (with strap) |
| Certification | CE | | |

* Battery life depends on the type of work required and the speed setting.

** Charger (not included): code P5030079

BELT BATTERY
SUPPORT KIT:
Support + cable
Compatible with 2.5 Ah
and 5 Ah batteries

Code P5030084



The Olivarex series with IBEA engines is designed to handle intensive and large-scale harvesting jobs where constant, prolonged power is required. These engine-powered shakers are especially suitable for situations where harvesting takes place far from charging points or when battery life may be insufficient. Ideal for large terrains or challenging conditions, they deliver high performance without interruptions, making them the perfect choice for professional and intensive harvesting needs.



Highly specialized engine

Seamless clutch bell

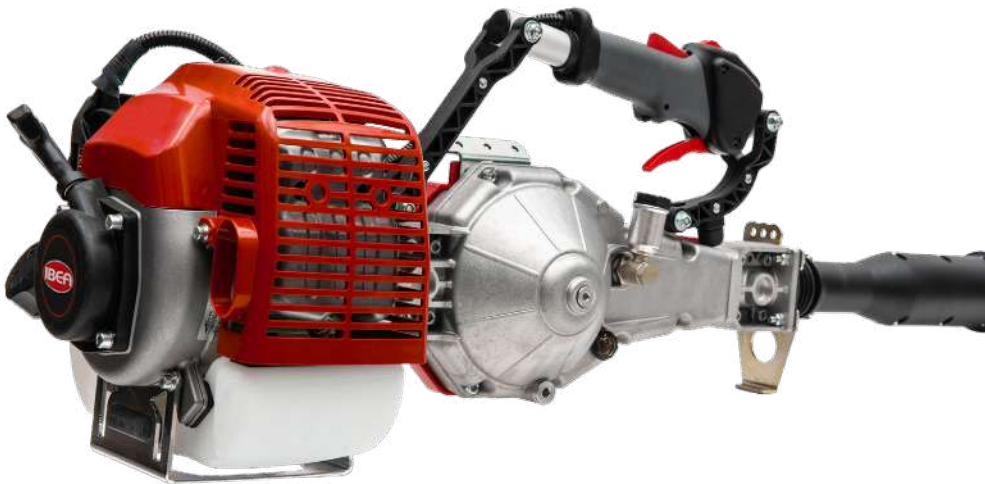
The clutch bell is made from a single piece, without welds, ensuring greater strength and reliability. This feature eliminates the risk of the bell detaching from the hub, even under intensive use or high stress.

Helical gear reducer with oil bath

The reducer, with its helical gears immersed in oil, guarantees smooth and efficient power transmission, minimizing energy losses. The use of helical gears also improves the reducer's capacity to handle high loads, offering optimal performance even during intensive use.

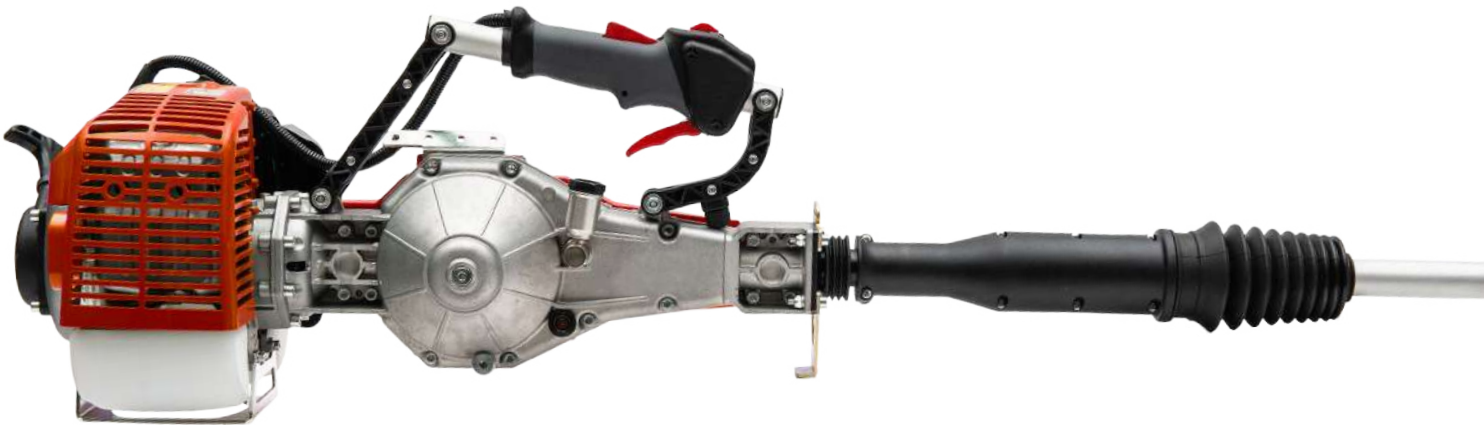
Professional three-sector clutch

The oversized 78 mm clutch with three sectors is designed to provide smooth and precise power transmission. The shoes, made of special wear-resistant material, ensure reliability and consistent performance over time.



Patented handle

The patented handle of the Olivarex IBEA is designed to offer an optimal user experience by combining anti-vibration functionality with ease of use. The anti-vibration system significantly reduces vibrations transmitted to the operator, ensuring comfort during prolonged work sessions and preventing fatigue.



IB-M6000T
Telescopic shaft

IB-M7000
Fixed shaft

| Model | IB-M6000T | IB-M7000 |
|-----------------------|--------------------|-----------------|
| Displacement | 51,7 cc | 63 cc |
| Shaft diameter | 30 mm | 30 mm |
| Power | 3,0 Cv / 2,2 kW | 4,5 Cv / 3,3 kW |
| Shaft length | da 2,10 m a 3,20 m | 4 m |
| Weight | 14 Kg | 14,5 Kg |
| Product certification | CE | |

Sod cutter

2WD & 4WD

The IBEA sod cutter range is designed for soil preparation and regeneration, proving to be an essential tool for the quick and effective removal of turf and sod. This type of machinery is particularly useful in maintenance work on sports fields, gardens, green areas, and landscaping restoration projects, where it is necessary to remove existing vegetation to prepare the ground for new crops, sowing, or planting.

The range includes models with 2-wheel drive, ideal for flat and easily accessible terrain, and versions with 4-wheel drive, designed to handle more challenging conditions such as slopes or wet and uneven soils.

Blade in special material

The blade is made of special material to ensure long durability. The working depth can be easily adjusted according to different needs.



Aluminum gearbox

Aluminum gearbox MADE IN ITALY with two forward gears, extremely resistant to corrosion and mechanical stress.

Handlebar with antivibration system



| Model | IB-300X2 IB-300X4 | IB-390X2 IB-390X4 |
|-----------------------|---------------------------|---------------------------|
| Engine | HONDA GX200 | |
| Engine power | 5.5 Cv/ 4.1 kW | |
| Working width | 30 cm | 39 cm |
| Cutting depth | 35 mm in 6 positions | |
| Transmission | 2 forward gears | |
| Gearbox lubrication | Oil | |
| Startup | Recoil | |
| Traction | IB-300X2 2-wheel drive | IB-390X2 2-wheel drive |
| | IB-300X4 4-wheel drive | IB-390X4 4-wheel drive |
| Transmission | Mechanics | |
| Weight | 79 Kg | 80 Kg |
| Product certification | CE | |



Chainsaws

The IBEA chainsaw range is designed to offer high performance and reliability in all cutting operations, from gardening tasks to more intensive forestry work. A distinctive feature of IBEA chainsaws is the use of a magnesium engine, a lightweight yet extremely durable material that helps reduce the overall weight of the machine without compromising power and longevity. This engine, combined with ergonomic design and innovative technology, ensures optimal efficiency, minimizing fuel consumption and vibrations, while improving operator comfort during use.

Professional chainsaws

| Model | 3000 | 3900 | 4000 |
|-------------------------------------|------------------------------------|--|--|
| Displacement | 30,1 cc | 38,0 cc | |
| Power | 1,4 Cv / 1,03 kW | 2,5 Cv / 1,8 kW | |
| Oil tank capacity | 0,18 Lt | 0,22 Lt | |
| Fuel tank capacity | 0,18 Lt | 0,35 Lt | |
| Weight - without bar and chain - | 3 Kg | 3,5 Kg | 3,8 Kg |
| Bar attachment | 1 stud | 2 studs | |
| Model code according to bar | 3000-25 3/8" x 1,3/25 cm | 3900-30 3/8" x 1,3/30 cm PR091 | 4000-30 3/8" x 1,3/30 cm PR091 |
| | 3000-30 3/8" x 1,3/30 cm | 3900-35 3/8" x 1,3/35 cm PR091 | 4000-35 3/8" x 1,3/35 cm PR091 |
| Product certification | CE | | |



3000



3900



4000

Felling chainsaws

| Model | 5000 | 5500 | 6000 |
|-------------------------------------|------------------------------------|------------------------------------|------------------------------------|
| Displacement | 51,0 cc | 56,0 cc | 61,0 cc |
| Power | 3,8 Cv / 2,7 kW | 4,1 Cv / 3,0 kW | 4,6 Cv / 3,4 kW |
| Oil tank capacity | 0,34 Lt | | |
| Fuel tank capacity | 0,65 Lt | | |
| Weight - without bar and chain - | 5,6 Kg | | |
| Bar attachment | 2 studs | | |
| Model code in base on the bar | 5000-45 .325 x 1,5/45 cm | 5500-45 .325 x 1,5/45 cm | 6000-45 .325 x 1,5/45 cm |
| | 5000-50 3/8" x 1,5/50 cm | 5500-50 3/8" x 1,5/50 cm | 6000-50 3/8" x 1,5/50 cm |
| Product certification | CE | | |

5000 | 5500 | 6000



Pruners

ELECTRONIC SHEARS

KRATOS

Pruners

ELECTRONIC PRUNER

ARES

The Kratos range of electronic shears is ideal for professional pruning work in vineyards, olive groves, and orchards, offering high performance and precision cutting. Thanks to the high-capacity battery, they are perfect for extended work without interruptions. Their ergonomic, lightweight, and manageable design ensures comfortable, fatigue-free use even during long sessions.

ARES, the new electronic saw, is a powerful and versatile tool for pruning and green maintenance. Weighing only 1.24 kg, it offers excellent maneuverability and performance, making it ideal for tree pruning and branch clearing. The 10 cm bar and fine chain ensure fast and efficient cutting, while the automatic chain lubrication system improves its durability and performance.

Cordless shears

| Model | KRATOS 25 | KRATOS 32 |
|----------------------------|-----------------|-----------|
| Operating voltage | 16,8 V | |
| Battery capacity | 2 Ah | 2,5 Ah |
| No. of batteries included | 2 | |
| Max. cutting width. | 25 mm | 32 mm |
| Intermediate cutting width | 15 mm | |
| Progressive cutting | Yes | |
| Screen | Built-in LCD | |
| Maximum power | 500 W | |
| Weight (with battery) | 940 g | 950 g |
| Charging time | 1-1,5 h | |
| Battery life | 3-4 h / Battery | |
| Engine | Brushless | |
| Product certification | CE | |



KRATOS 25



KRATOS 32



Included accessories

Complete case with:

- two batteries
- charger
- blade sharpening stone
- sheath
- tool kit

KRATOS 25-32 EXTENSION

Handle with wireless connection
Length: from 1.55 m to 2.2 m

Code: F805010



High-quality gears and bearings

KRATOS 40



Included accessories

Complete case with:

- charger
- battery-to-shear connection cable
- blade sharpening stone
- sheath
- tool kit



1. Enhanced electronic board and motor
2. Removable side door for easy cleaning of electric motor
3. Automatic oil pump
4. Oversized oil cap for easy filling of the oil tank
5. Convenient hole for greasing bevel gear pair (under the body)
6. Easy chain replacement/maintenance without the use of wrenches
7. Handle designed for a smaller footprint

| Model | ARES |
|---------------------|---------------------|
| Power supply | electrical |
| Voltage | 14,4 V |
| Machine length | 41,5 cm |
| Machine weight | 1,01 Kg |
| Battery weight | 0,23 Kg |
| Charging time | 1.5 to 2 hours |
| Engine power | 500 Watts |
| Battery | 2.5 Ah - 36 Wh (x2) |
| Chain speed | 8.5 m/s |
| Bar length | 4" - 10 cm |
| Chain | 1/4" - 34 links |
| Lubrication | automatic |
| Pinion greaser | manual |
| Product certificate | CE |



Included accessories

Complete case with:

- Two batteries
- Charger
- Chain file
- Sheath
- Tool kit

Tying Machine

THOR

The IBEA THOR tying machine represents a cutting-edge solution for industry professionals. Equipped with 4 tying tension settings, it offers great versatility and can be used with different types of wire, ensuring optimal performance in every situation. The two 2Ah batteries provide up to 16 hours of autonomy (6-8 hours per battery), allowing for extended operations without interruptions. The tying machine stands out for its light weight, thanks to the use of innovative materials, and for the ergonomic soft-touch handle that ensures superior comfort during use. The digital display provides real-time information for full control while working. After pruning, THOR will become an indispensable ally for your activity.

Technopolymer cover

| | |
|---------------------------|--------------|
| Model | THOR |
| Operating voltage (max) | 16.8 V |
| Battery capacity | 2 Ah |
| No. of batteries included | 2 |
| Maximum tying capacity | 25 mm |
| Tie mode | 4 |
| Maximum power | 50 W |
| Weight (with battery) | 1180 g |
| Charging time | 1-1,5 h |
| Battery life | 6.8 h |
| Screen | Built-in LCD |
| Engine | brushless |
| Product certificate | CE |



LCD screen with indicators

Complete case including:

- Battery charge level
- Total number of ties
- Number of ties since last switch-on
- Set tying tension level

Rototillers

To get the best results with rototillers, generally, the first pass breaks the surface crust, while the second pass works the soil deeply.

All models are equipped with side discs that help maneuver the rototiller, delimit the working area, and contain the lateral discharge of the soil. On very soft ground, the side discs also help the machine work properly without sinking. On very hard soil, it is recommended to till without discs to allow the blades to work deeply, as well as on wet soil that tends to clog the tiller.



IB-MZ450L



IB-MZ750L

Adjustable handles



IB-MZ850L

Adjustable handles

| Model | IB-MZ450L | IB-MZ750L | IB-MZ850L |
|-----------------------|---------------------------|---|-------------------------------|
| Engine | IBEA 4T | | |
| Displacement | 139 cc | 196 cc | |
| Engine power | 2,4 kW | 4,1 kW | |
| Transmission | Single-speed | 2 forward + 1 reverse | |
| Working width | 36 cm | 60-90 cm | 90 cm |
| Handlebar | Adjustable in height | Adjustable in height, laterally orientable | |
| Front wheel | Yes | | |
| Transmission | Belt and screw endless | Double belt | Gears with oil bath clutch |
| Dimensions | 114x36x95 cm | 163x85x105 cm | 150x90x90 cm |
| Weight | 27,5 Kg | 69 Kg | 85 Kg |
| Product certification | CE | | |



Ridger IB-ASS02

Optional for models:
IB-MZ750L e
IB-MZ850L

Motor Pumps

When choosing a water pump, the fundamental parameters to consider relative to use are:

- Flow rate: the volume of water pumped in a given time, expressed in liters per minute (l/min).
- Head (Prevalence): a physical quantity, expressed in meters, indicating the maximum height to which a pump can push water compared to the source level.
- Discharge (Outlet): the outlet area or flange where fluid exits the pump volute (pump body). The suction fitting allows the pump to draw water through a suction hose with its end submerged. The larger the size of these, the greater the volume of water the pump can handle. Pumps with higher values in these parameters speed up the fluid movement.

Self-priming pumps for clear water

Irrigate and transfer water autonomously and easily. The high-performance impeller and its durable volute guarantee excellent performance in terms of both head and flow rate under all conditions. The oil alert system, which automatically shuts down the engine when oil is low, prevents damage caused by lack of lubrication.

Droughts and floods will no longer be a problem.



IB-MP25

IB-MP40

IB-MP80

| Model | IB-MP25 | IB-MP40 | IB-MP80 |
|-----------------------|--|----------------|----------------|
| Engine | IBEA, 4-stroke, air-cooled, 1 cylinder | | |
| Displacement | 80 cc | | |
| Power | 1,7 kW / 3600 rpm | | |
| Startup | Self-winding | | |
| Suction and delivery | Ø 25 (1") | Ø 40 (1,5") | Ø 80 (3") |
| Suction capacity | 5 m | 5 m | 6 m |
| Maximum head | 20 m | 20 m | 35 m |
| Maximum capacity | 166 Lt/min | 250 Lt/min | 1000 Lt/min |
| Weight | 13,5 Kg | 13 Kg | 26,5 Kg |
| Dimensions | 427x333x363 mm | 376x332x384 mm | 550x430x470 mm |
| Product certification | CE | | |

Generators

AVR

Our generators guarantee long autonomy even at maximum power, thanks to efficient engines and large fuel tanks. All are equipped with trolley kits for easy transport.

With both recoil and electric start, they are simple to operate for any user. The wide range includes single-phase models for domestic use and three-phase models for industrial or civil use.



Same power guaranteed in both single-phase and three-phase versions.



IB-G3500
Single-phase



IB-G5800
Single-phase



IB-G6500 ET
Single-phase/Three-phase

| Model | IB-G3500 | IB-G5800 | IB-G6500 ET |
|-----------------------|--|----------------|--|
| Engine | IBEA, 4-stroke, air-cooled, 1 cylinder | | |
| Displacement | 212 cc | 389 cc | 420 cc |
| Fuel | Unleaded Gasoline | | |
| Frequency | 50 Hz | | |
| Rated voltage | Single-phase 230 V | | Single-phase/three-phase 230 V / 380 V |
| Maximum power | 3,1 kW | 5,5 kW | 6,5 kW |
| DC output | 12 V / 8,3 A | | |
| Tank capacity | 15 Lt | 25 Lt | |
| Startup | Recoil | Recoil | Recoil/electric |
| Noise level | 72 dbA | | |
| Dimensions | 610x465x460 mm | 700x600x580 mm | 700x600x580 mm |
| Weight | 50 Kg | 93 Kg | 96,5 Kg |
| Trolley Kit | INCLUDED | | |
| Product certification | CE | | |

Generators

SILENCED
INVERTERS



IB-LC2000I
Single-phase

To provide electrical power with constant frequency and voltage.

Compared to traditional generators, IBEA inverters are lightweight, compact, and noise-reduced; thanks to the electronic control of the engine speed according to the load applied, fuel savings are significant as well as the reduction of exhaust emissions.

Reliable
Long autonomy
Quiet

| Model | IB-LC2000I | IB-LC3500I |
|-----------------------|--------------------|-----------------|
| Engine | IBEA, 4-stroke | |
| Displacement | 79 cc | 212 cc |
| Fuel | Unleaded Gasoline | |
| Frequency | 50 Hz | |
| Rated voltage | Single-phase 230 V | |
| Maximum power | 2,3 kW | 4,5 kW |
| DC output | 12 V / 8,3 A | |
| Tank capacity | 4,2 Lt | 9 Lt |
| Startup | Recoil | Recoil/electric |
| Noise level | 61 dbA | 65 dbA |
| Dimensions | 499x285x455 mm | 578x440x510 mm |
| Weight | 21 Kg | 45 Kg |
| Trolley Kit | No | Yes |
| Product certification | CE | |



IB-LC3500I
Single-phase

Engines

ENGINES



140
139 cc

166
166 cc

200
196 cc

Vertical
Shaft Engines

Lawn mower version with integrated blade brake.

| Model | P5120240 | P5120241 | P5120243 |
|-----------------------|-------------------|-------------------|-------------------|
| Displacement | 139 cc | 166 cc | 196 cc |
| Maximum power | 2,4 Kw / 3600 rpm | 2,9 Kw / 3600 rpm | 4,0 Kw / 3600 rpm |
| Maximum torque | 7,5 Nm / 2500 rpm | 9,5 Nm / 2500 rpm | 12 Nm / 2500 rpm |
| Code | 051564 | 051565 | 051567 |
| Shaft | Vertical 22x60 mm | | |
| Product certification | CE | | |



212
212 cc

Horizontal
Shaft Engines

Version with 3/4" cylindrical shaft.

| Model | P5120227 |
|-----------------------|-------------------|
| Displacement | 212 cc |
| Maximum power | 4,4 Kw / 3600 rpm |
| Maximum torque | 12 Nm / 2500 rpm |
| Code | 042044 |
| Shaft | Horizontal 3/4" |
| Product certification | CE |

Battery Line

IBEA

MADE IN ITALY

new

New range

battery-powered

MADE IN ITALY

The new range of IBEA battery-powered products represents an important evolution in our lineup, with tools designed and developed entirely in-house to ensure quality, reliability, and excellence, in keeping with the tradition of Made in Italy.

The range includes the HEXIS hedge trimmer, the ORION hybrid brush cutter, and the Olivarex shaker model IB-E5000ECO, all engineered to deliver excellent performance in every usage scenario.

All tools are powered by a universal battery system available in three versions:

- Cordless battery packs of 2.5 Ah or 5 Ah (not compatible with the IB-E5000ECO)
- Belt battery packs of 2.5 Ah or 5 Ah
- Backpack battery pack of 20 Ah – 800 W

We are already developing new tools with the goal of creating a complete range to meet all the needs of professionals and enthusiasts, while maintaining our commitment to innovation and 100% Italian quality.

All the power

you need

3 battery models



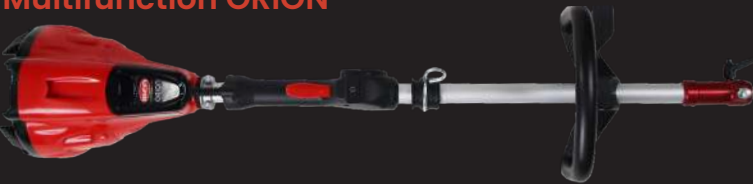
| Model | Cordless battery 2.5 Ah | Cordless battery 5 Ah | Backpack battery 20 Ah |
|---------------|----------------------------|--------------------------|---------------------------|
| Code | P5030078 | P5030081 | P5030082 |
| Voltage | 40 V | 40 V | 40 V |
| Capacity | 2,5 Ah | 5 Ah | 20 Ah |
| Charging time | 1.5 h** | 3 h** | 6 h |
| Weight | 0.7 Kg | 1.2 Kg | 5.4 Kg (with straps) |
| Certification | CE | | |

**Charger (not included): code P5030079

You can check the battery runtime for each battery in relation to the machine it is used with, in the specific section for each machine.



Multifunction ORION



Hedge trimmer HEXIS



Olive harvester OLIVAREX® IB-E5000ECO



Hedge trimmer ORION TS1500ECO



Pruner ORION PR1500ECO



MADE IN ITALY



Accessories Catalogue

2026



Always use original Ibea spare parts and accessories

SPARK PLUGS



| CODE | MODEL |
|----------|--|
| KA-10079 | IBEA MR80 SPARK PLUG Box of 100 pcs |
| KA-10111 | IBEA MR80 SPARK PLUG – 1 pc |
| KA-10078 | IBEA RX80 SPARK PLUG Box of 100 pcs |
| KA-10110 | IBEA RX80 SPARK PLUG – 1 pc |

NEW Overtrousers

Breathable nylon overtrousers with a light sky layer. Easily tied around the waist.
ONE SIZE FITS ALL

| CODE |
|--------|
| IB-CPA |



NEW Harness

Professional brushcutter harness with ergonomic double shoulder straps and quick-release system.

| CODE |
|----------|
| KA-10098 |



Katana® line

Available in round, square, saw, and star profiles, with diameters ranging from 2.4 mm to 4 mm, allowing easy cutting of any type of grass.

The exceptional resistance and durability of this line make it a unique and unmatched product on the market. Choose the format that best suits your needs:



15 mt

0,5 Kg

2 Kg

8 Kg

| LINE CONVERSION FROM KG TO METERS | | | | |
|--|---------------|----------------|-------------|--------------|
| | ROUND PROFILE | SQUARE PROFILE | SAW PROFILE | STAR PROFILE |
| Ø mm | mt./kg. | mt./kg. | mt./kg. | mt./kg. |
| 1,6 | 470 | - | - | - |
| 2,0 | 270 | - | - | - |
| 2,4 | 200 | 175 | - | - |
| 2,7 | 150 | 135 | 134 | - |
| 3,0 | 134 | 112 | - | 142 |
| 3,3 | 112 | 90 | 89 | 118 |
| 3,5 | 92 | - | - | 94 |
| 4,0 | 74 | 60 | 60 | - |
| The conversion of line from kilograms to meters is a key factor to consider during the purchasing phase. | | | | |

Katana® Star Line

new

IBEA Srl expands the KATANA® range with a new 6-point star-section brushcutter line, designed to deliver a more aggressive and precise cut, even on dense and tough vegetation.

The aerodynamic shape reduces air resistance, limiting overheating and optimizing fuel consumption. An ideal choice for those seeking efficiency, durability, and professional performance.



Round profile

15 mτ Code for 20-PIECE pack

| CODE | DIAMETER (mm) |
|----------|---------------|
| KA-10075 | Ø 1,6 |
| KA-10076 | Ø 2,0 |
| KA-10000 | Ø 2,4 |
| KA-10001 | Ø 2,7 |
| KA-10002 | Ø 3,0 |
| KA-10003 | Ø 3,3 |
| KA-10004 | Ø 3,5 |
| KA-10005 | Ø 4,0 |

* Sold separately

2 Kg Code for 1 SPOOL pack

| CODE | DIAMETER (mm) |
|----------|---------------|
| KA-10028 | Ø 2,4 |
| KA-10029 | Ø 2,7 |
| KA-10030 | Ø 3,0 |
| KA-10031 | Ø 3,3 |
| KA-10032 | Ø 3,5 |
| KA-10033 | Ø 4,0 |

0,5 Kg Code for 20-PIECE pack

| CODE | DIAMETER (mm) |
|----------|---------------|
| KA-10014 | Ø 2,4 |
| KA-10015 | Ø 2,7 |
| KA-10016 | Ø 3,0 |
| KA-10017 | Ø 3,3 |
| KA-10018 | Ø 3,5 |
| KA-10019 | Ø 4,0 |

8 Kg Code for 1 SPOOL pack, priced per Kg

| CODE | DIAMETER (mm) |
|----------|---------------|
| KA-10042 | Ø 2,4 |
| KA-10043 | Ø 2,7 |
| KA-10044 | Ø 3,0 |
| KA-10045 | Ø 3,3 |
| KA-10046 | Ø 3,5 |
| KA-10047 | Ø 4,0 |

Saw profile

15 mτ Code for 20-PIECE pack

| CODE | DIAMETER (mm) |
|----------|---------------|
| KA-10011 | Ø 2,7 |
| KA-10012 | Ø 3,3 |
| KA-10013 | Ø 4,0 |

0,5 Kg Code for 20-PIECE pack

| CODE | DIAMETER (mm) |
|----------|---------------|
| KA-10025 | Ø 2,7 |
| KA-10026 | Ø 3,3 |
| KA-10027 | Ø 4,0 |

2 Kg Code for 1 SPOOL pack

| CODE | DIAMETER (mm) |
|----------|---------------|
| KA-10039 | Ø 2,7 |
| KA-10040 | Ø 3,3 |
| KA-10041 | Ø 4,0 |

8 Kg Code for 1 SPOOL pack, priced per Kg

| CODE | DIAMETER (mm) |
|----------|---------------|
| KA-10053 | Ø 2,7 |
| KA-10054 | Ø 3,3 |
| KA-10055 | Ø 4,0 |

Square profile

15 mτ Code for 20-PIECE pack

| CODE | DIAMETER (mm) |
|-----------|---------------|
| KA-10006 | Ø 2,4 |
| KA-10007 | Ø 2,7 |
| KA-10008 | Ø 3,0 |
| KA-10009 | Ø 3,3 |
| KA-100010 | Ø 4,0 |

2 Kg Code for 1 SPOOL pack

| CODE | DIAMETER (mm) |
|----------|---------------|
| KA-10034 | Ø 2,4 |
| KA-10035 | Ø 2,7 |
| KA-10036 | Ø 3,0 |
| KA-10037 | Ø 3,3 |
| KA-10038 | Ø 4,0 |

0,5 Kg Code for 20-PIECE pack

| CODE | DIAMETER (mm) |
|----------|---------------|
| KA-10020 | Ø 2,4 |
| KA-10021 | Ø 2,7 |
| KA-10022 | Ø 3,0 |
| KA-10023 | Ø 3,3 |
| KA-10024 | Ø 4,0 |

8 Kg Code for 1 SPOOL pack, priced per Kg

| CODE | DIAMETER (mm) |
|----------|---------------|
| KA-10048 | Ø 2,4 |
| KA-10049 | Ø 2,7 |
| KA-10050 | Ø 3,0 |
| KA-10051 | Ø 3,3 |
| KA-10052 | Ø 4,0 |

Star profile

15 mτ Code for 20-PIECE pack

| CODE | DIAMETER (mm) |
|----------|---------------|
| KA-10095 | Ø 3,0 |
| KA-10096 | Ø 3,3 |
| KA-10097 | Ø 3,5 |

NEW
New star-section line designed to reduce air friction. The result? A quieter line that lowers fuel consumption.

0,5 Kg Code for 20-PIECE pack

| CODE | DIAMETER (mm) |
|----------|---------------|
| KA-10088 | Ø 3,0 |
| KA-10089 | Ø 3,3 |
| KA-10090 | Ø 3,5 |

8 Kg Code for 1 SPOOL pack, priced per Kg

| CODE | DIAMETER (mm) |
|----------|---------------|
| KA-10091 | Ø 3,0 |
| KA-10092 | Ø 3,3 |
| KA-10093 | Ø 3,5 |

Katana® Nylon Heads SHARP

Tap&Go
with easy
line-loading system

The fastest automatic line-loading
system in its category



Heavy Model

Steel knob designed to
ensure maximum strength
and durability

Soft Model

Lightweight spool made of plastic
and fiberglass with a central steel
reinforcement



Line-loading capacity Some examples

| LINE DIAMETER (mm) | 2.4 | 2.7 | 3.0 | 3.3 | 3.5 | 4.0 | 3.0 | 3.5 | 3.3 |
|--------------------|-------|-----|-----|-----|-----|-----|--------|-----|-----|
| LINE SECTION | Round | | | | | | Square | | Saw |
| HEAD CAPACITY (m) | 12.0 | 9.0 | 7.8 | 6.8 | 5.5 | 3.5 | 5.2 | 4.5 | 3.0 |

SMART

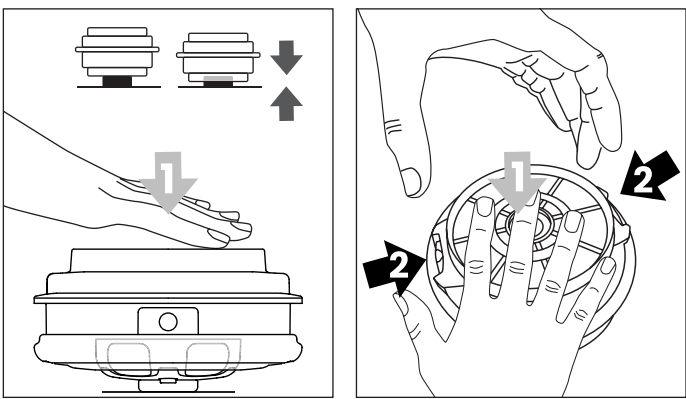
Tap&Go
with fast and intuitive line-loading system
thanks to the dedicated line guide

Line-loading capacity Some examples

| LINE DIAMETER (mm) | 2.4 | 3.0 |
|--------------------|-------|-----|
| LINE SECTION | Round | |
| HEAD CAPACITY (m) | 10.0 | 7.0 |



Katana® Heads

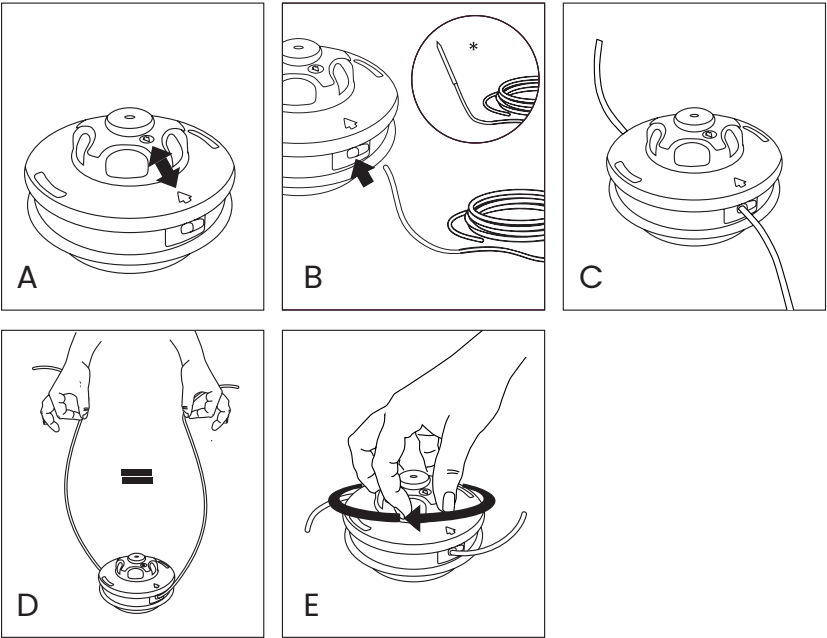


Convenient Opening System

The head features an extremely user-friendly
opening system, allowing the cover to be deta-
ched from the head body for maintenance or to
remove leftover line segments.

Fast Reloading System

- A. Align the arrow with the bushing
- B. Insert the line (*use the line guide
tube with the SMART head)
- C. Pull the line through the opposite side
- D. Equalize the line length
- E. Rotate the knob to wind the line



Katana® Head Inserts

For SHARP
& SMART

| | |
|---------|----------------------------|
| P020376 | INSERT M7 x 1 SM/GM/LM |
| P020380 | INSERT M8 x 1,25 SM/GM/LM |
| P020381 | INSERT M8 x 1,25 SF/GF/LF |
| P020377 | INSERT M10 x 1 SF/GF/LF |
| P020382 | INSERT M10 x 1,25 SM/GM/LM |
| P020383 | INSERT M10 x 1,25 SF/GF/LF |

| | |
|---------|----------------------------|
| P020379 | INSERT M10 x 1,50 SM/GM/LM |
| P020469 | INSERT M10 x 1,50 SF/GF/LF |
| P020632 | INSERT M12 x 1,25 SF/GF/LF |
| P020384 | INSERT M12 x 1,50 SF/GF/LF |
| P020378 | INSERT M12 x 1,75 SF/GF/LF |
| P020500 | INSERT M14 x 1,50 SF/GF/LF |

Katana® Heads SHARP

Heavy Model

Code for
20-PIECE pack

| CODE | MODEL |
|----------|--------------------------------|
| KA-10100 | HEAVY HEAD M10 X 1.25 SF/GF/LF |
| KA-10101 | HEAVY HEAD WITHOUT INSERT |
| KA-10102 | UNIVERSAL HEAVY HEAD |



Soft Model

Code for
20-PIECE pack

| CODE | MODEL |
|----------|-------------------------------|
| KA-10103 | SOFT HEAD M10 X 1.25 SF/GF/LF |
| KA-10104 | SOFT HEAD WITHOUT INSERT |
| KA-10105 | UNIVERSAL SOFT HEAD |

SHARP spare parts



| CODE | MODEL |
|----------|---|
| P026484 | UNIVERSAL HEAD BODY (E) |
| P026483 | HEAD BODY WITH INSERT (E) |
| P025502 | LINE GUIDE BUSHING (F) |
| P025503 | LINE GUIDE INSERT – 2-PIECE COMPONENT (G) |
| P026480 | COVER (A) |
| P027383 | HEAVY SPOOL (B) |
| P5160108 | SOFT SPOOL (H) |
| P021008 | SPRING (D) |
| P021006 | HEAD WASHER D.120 MM, HOLE 10 MM |
| P021078 | HEAD WASHER D.120 MM, HOLE 12 MM |
| P021076 | SPACER FOR BLADES 25.5 – 20 MM |

Katana® Heads SMART



| CODE | MODEL |
|----------|---------------------------------------|
| KA-10057 | PLASTIC KNOB HEAD M8 x 1,25 SF/GF/LF |
| KA-10058 | PLASTIC KNOB HEAD M10 x 1,25 SF/GF/LF |
| KA-10059 | UNIVERSAL PLASTIC KNOB HEAD |
| KA-10060 | PLASTIC KNOB HEAD WITHOUT INSERT |
| KA-10061 | STEEL KNOB HEAD M8 x 1,25 SF/GF/LF |
| KA-10062 | STEEL KNOB HEAD M10 x 1,25 SF/GF/LF |
| KA-10063 | UNIVERSAL STEEL KNOB HEAD |
| KA-10064 | STEEL KNOB HEAD WITHOUT INSERT |

SMART spare parts

| CODE | MODEL |
|---------|------------------------------------|
| P025342 | COVER (A) |
| P025389 | STEEL KNOB SPOOL (B) |
| P025388 | NYLON KNOB SPOOL (C) |
| P021008 | SPRING (D) |
| P025340 | INSERT BODY (E) |
| P025341 | UNIVERSAL INSERT BODY (E) |
| P021002 | BRASS BUSHING (F) |
| P021241 | OVERSIZED BUSHING FOR SAW LINE (F) |
| P020363 | LINE GUIDE TUBE (H) |
| P021006 | HEAD WASHER D.120 mm, HOLE 10 mm |
| P021078 | HEAD WASHER D.120 mm, HOLE 12 mm |
| P020681 | M10 HEAD WASHER D.150 mm |
| P021076 | DISC SPACER 25.5 – 20 mm |



LUBRICANTS

FUEL MIXING OIL

A guarantee for engine durability and proper functioning.
Choose the type and format of oil best suited to your needs:

100% Synthetic

| CODE | PACKAGING |
|----------|--------------------|
| KA-10068 | 100 ml - 30 pieces |
| KA-10069 | 1 Lt - 12 pieces |
| KA-10070 | 5 Lt - 4 pieces |



Additivated Synthetic



| CODE | PACKAGING |
|----------|--------------------|
| KA-10065 | 100 ml - 30 pieces |
| KA-10066 | 1 Lt - 12 pieces |
| KA-10067 | 5 Lt - 4 pieces |

IBEA CHAIN OIL

100% vegetable-based, ensures excellent lubrication of chainsaw bars and chains. Thanks to its antioxidant and anticorrosive properties, it also protects the machine's oil pump.

| CODE | PACKAGING |
|----------|------------------|
| KA-10072 | 2 Lt - 12 pieces |
| KA-10071 | 5 Lt - 4 pieces |

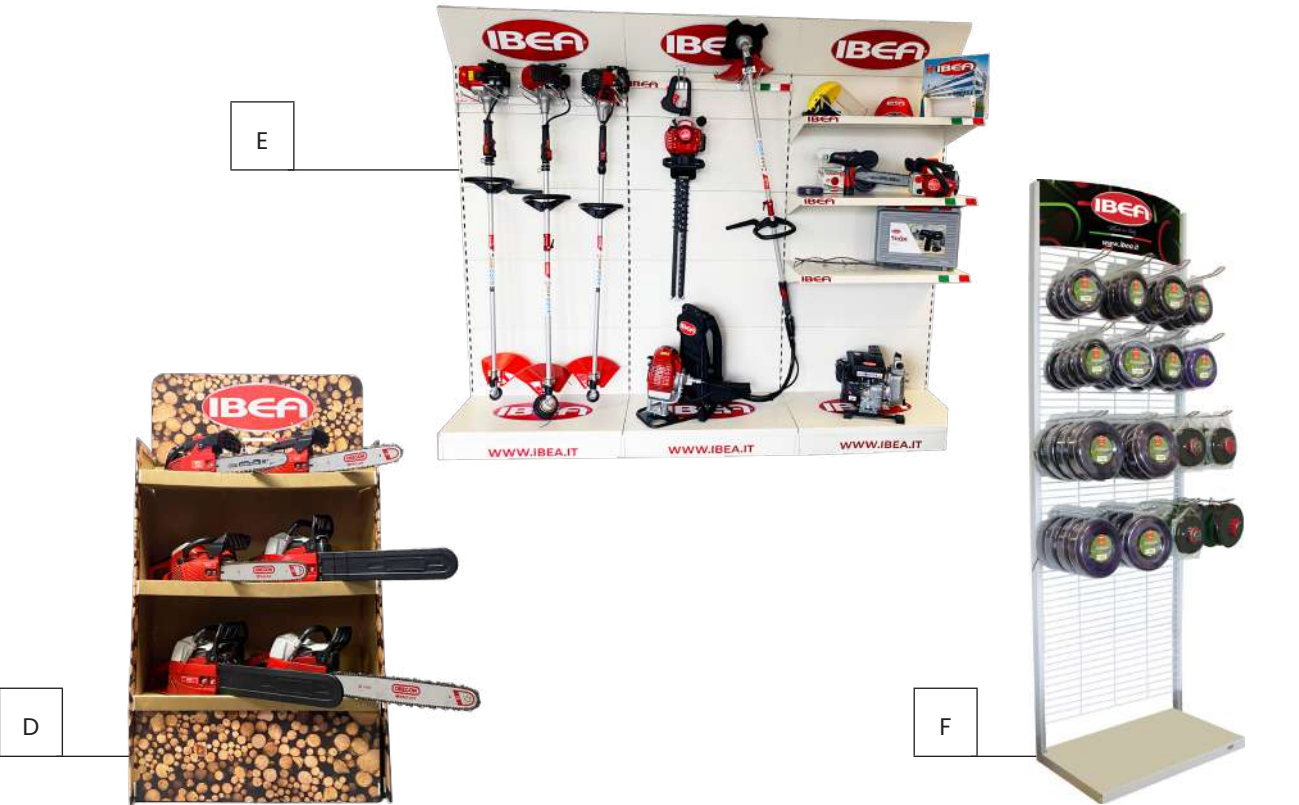


MULTI.GREASE

Red Nozzle: conveniently stored in the multi-grease cap. Ideal for directing the product precisely, without waste.
Grey Nozzle: included in the packaging, helps direct the grease into ball-type grease fittings.

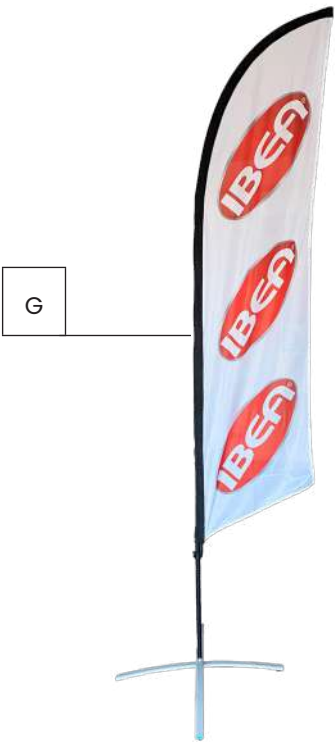
| CODE | MODEL |
|---------|--|
| F805009 | Multipurpose Lithium Grease Pack of 12 pieces |

ADVERTISING MATERIAL



| | CODE | MODEL |
|---|-------------|-------------------------------------|
| A | IB-KITTOS | LAWNMOWER DISPLAY STAND KIT (x2) |
| B | IB-ESPOLI2 | OLIVAREX DISPLAY 1000x750x450 mm |
| C | IB-ESP-FORB | KRATOS COUNTER DISPLAY |

| | CODE | MODEL |
|---|------------------|-------------------------------------|
| D | IB-ESPOMTS | CHAINSAW DISPLAY |
| E | IB-WALLUNIT | MODULAR DISPLAY 2200x2700x450 mm |
| F | IB-ESP-ACCESSORI | ACCESSORIES DISPLAY |



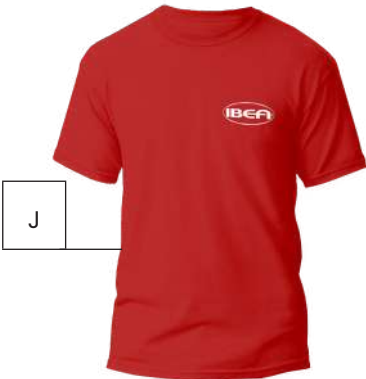
G



H



I



J



K



L



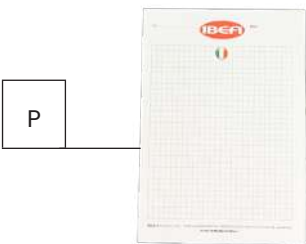
M



N



O



P

| | CODE | MODEL |
|---|--------------|-------------------------------------|
| G | IB-VELA-IBEA | SAIL |
| H | IB-BAND | FLAG |
| I | IB-USB | USB FLASH DRIVE |
| J | IB-TSH01 | T-SHIRT 100% COTTON S M L XL XXL |
| K | IB-CAP | CAP |

| | CODE | MODEL |
|---|------------|-----------------------|
| L | IB-BORSA | BAG |
| M | IB-SHOPPER | GUSSET SHOPPER BAG |
| N | IB-PENNA | PEN |
| O | IB-POST-IT | POST-IT |
| P | NOTES | NOTEPAD |

NOTES



Via Milano, 15/17
21049 Tradate (VA)

Tel: +39 0331 158 6940
Fax: +39 0331 158 2268

Email: ibea@ibea.it
C.F. e P.I.: 01589110194